

Roll No:

Registration No:

Name:

Date: **05-Jan-2019 -2nd Shift**

Examination: **Online Examination - SI**

Section 1 - Online Examination

Question No.1

1.00

Bookmark

Which of these is the largest island in the world?

- (A) Maldives - (Alternative 1)
- (B) Finland - (Alternative 3)
- (C) **Greenland - (Alternative 2)**
- (D) Shells - (Alternative 4)

Question No.2

1.00

Bookmark

Sultan Aljan Shah Cup is associated with which of these sports?

- (A) **Hockey - (Alternative 3)**
- (B) Golf - (Alternative 4)
- (C) Rowing - (Alternative 2)
- (D) Chase - (Alternative 1)

Question No.3

1.00

Bookmark

What is the time period formula?

- (A) Frequency / 2 - (Optional 1)
- (B) 2 / Frequency - (Optional 2)
- (C) Frequency / 4 - (Optional 4)
- (D) **1 / Frequency - (Optional 3)**

Question No.4

1.00

Bookmark

The Chairman of the Lok Sabha will have to send his resignation letter -

- (A) Prime Minister - (Alternative 2)
- (B) President - (Alternative 1)
- (C) **Deputy Speaker of Lok Sabha - (Alternative 3)**
- (D) Ministers of Parliamentary Affairs - (Alternative 4)

Question No.5

1.00

Bookmark

What is the formula of baking soda?

- (A) NaHCO_2 - (Optional 2)
- (B) Na_2Co_4 - (Optional 1)
-

(C) Na_2CO_3 - (Alternative 4)

(D) **NaHCO_3 - (Optional 3)**

Question No.6

1.00

Bookmark

Who is the Indian player to score the first century in the Indian Premier League (IPL)?

(A) Rohit Sharma - (Alternative 3)

(B) Virat Kohli - (Alternative 2)

(C) Shikhar Dhawan - (Alternative 4)

(D) **Manish Pandey - (Alternative 1)**

Question No.7

1.00

Bookmark

Where is the Martand Sun temple situated?

(A) Varanasi - (Alternative 3)

(B) Shimla - (Alternative 2)

(C) **Kashmir - (Alternative 1)**

(D) Madurai - (Alternative 4)

Question No.8

1.00

Bookmark

Which of these years was determined by the United Nations?

(A) 2005 - (Alternative 3)

(B) 2006 - (Alternative 2)

(C) **2004 - (Alternative 4)**

(D) 2007 - (Optional 1)

Question No.9

1.00

Bookmark

The compilation of Kabir's compositions is called

(A) Abhanga - (Alternative 4)

(B) Dissertation - (Alternative 3)

(C) Mode - (Optional 1)

(D) **Invoice - (Optional 2)**

Question No.10

1.00

Bookmark

What is the surname of Harbhajan Singh?

(A) The Wal - (Alternative 3)

(B) Jamie - (Alternative 4)

(C) Flying Man - (Alternative 1)

(D) **The Turbanator - (Alternative 2)**

Question No.11

1.00

Bookmark

When was 'Dandi March' organized?

- (A) 1940 - (Alternative 1)
- (B) 1947 - (Alternative 4)
- (C) **1930 - (Alternative 2)**
- (D) 1950 - (Alternative 3)

Question No.12

1.00

Bookmark

The process of loosening and folding the soil is called -

- (A) **Grassroot (3)**
- (B) Weeding - (Alternative 1)
- (C) Soup - (Alternative 4)
- (D) Sow - (Alternative 2)

Question No.13

1.00

Bookmark

When did the Rangpur rebellion happen?

- (A) 1689 - (Optional 3)
- (B) 1986 - (Alternative 4)
- (C) **1783 - (Alternative 2)**
- (D) 1729 - (Optional 1)

Question No.14

1.00

Bookmark

Announcement of new Foreign Trade Policy in India has been done for the year.

- (A) 2016 - 21 - (Alternative 2)
- (B) 2017 - 22 - (Optional 1)
- (C) 2014 - 19 - (Optional 3)
- (D) **2015 - 20 - (Optional 4)**

Question No.15

1.00

Bookmark

Which of these crops is not an oil crop?

- (A) Mustard - (Alternative 4)
- (B) Sesame - (Optional 3)
- (C) Peanut - (Alternative 2)
- (D) **Millet - (Alternative 1)**

Question No.16

1.00

Bookmark

According to 2011, which of the following Union Territories of India is the lowest sex ratio state?

- (A) Delhi - (Alternative 1)
- (B) Andaman and Nicobar Islands - (Alternative 2)
- (C) **Daman and Diu - (Alternative 4)**
- (D) Lakshadweep - (Alternative 3)

Question no.17

1.00

Bookmark

Who won the Women's Singles title at US Open 2018?

- (A) Serena Williams - (Alternative 1)
- (B) **Naomi Osaka - (Alternative 3)**
- (C) Simona Halep - (Alternative 4)
- (D) Sania Mirza - (Alternative 2)

Question No.18

1.00

Bookmark

The Republic of India has _____ states and _____ Union Territories.

- (A) **29 and 7 - (Optional 2)**
- (B) 28 and 8 - (Optional 1)
- (C) 28 and 7 - (Optional 4)
- (D) 29 and 11 - (Optional 3)

Question No.19

1.00

Bookmark

Who is the Chairman of the Seventh Central Pay Commission?

- (A) MK Jain - (Alternative 4)
- (B) NS Vishwanathan - (Alternative 2)
- (C) s. Gurumurthy - (Alternative 3)
- (D) **Ashok Kumar Mathur - (Alternative 1)**

Question No.20

1.00

Bookmark

How many parliamentary constituencies are seats in Union Territory of Puducherry?

- (A) 3 - (Optional 3)
- (B) **1 - (Optional 1)**
- (C) 2 - (Optional 2)
- (D) 4 - (Optional 4)

Question no.21

1.00

Bookmark

In which of these countries is the Gobi Desert located?

- (A) U.S.A. (Alternative 4)
- (B) Chile - (Alternative 3)
- (C) **Mongolia - (Alternative 2)**
- (D) Japan - (Alternative 1)

Question no.22

1.00

Bookmark

Kaziranga National Park is situated-

- (A) **Assam - (Alternative 3)**
- (B) Haryana - (Alternative 4)
- (C) New Delhi - (Alternative 2)

(D) Gujarat - (Alternative 1)

Question no.23

1.00

Bookmark

Which of these is the natural source of acidic acid?

- (A) Milk - (Alternative 1)
- (B) **Tomato - (Alternative 4)**
- (C) Ants Sting - (Alternative 2)
- (D) Lemon - (Alternative 3)

Question no.24

1.00

Bookmark

Kalamkari painting is related to which state?

- (A) **Andhra Pradesh - (Alternative 2)**
- (B) Manipur - (Alternative 4)
- (C) West Bengal - (Alternative 3)
- (D) Maharashtra - (Alternative 1)

Question No.25

1.00

Bookmark

Energy derived from the internal heat of the Earth is called _____ energy.

- (A) Potential - (Optional 1)
- (B) Solar - (Alternative 4)
- (C) Kinetic - (optional 3)
- (D) **Geothermal - (Alternative 2)**

Question no.26

1.00

Bookmark

Who gave the slogan 'Come to Delhi'?

- (A) **Netaji Subash Chandra Bose - (Alternative 4)**
- (B) Mahatma Gandhi - (Alternative 2)
- (C) Pandit Jawaharlal Nehru - (Alternative 1)
- (D) Lord Curzon - (Alternative 3)

Question no.27

1.00

Bookmark

Who founded the Mohammedan Anglo-Oriental College in Aligarh?

- (A) Maulana Abul Kalam Azad - (Alternative 2)
- (B) **Syed Ahmed Khan - (Alternative 4)**
- (C) Maulana Hasrat Mohani - (Alternative 1)
- (D) Dr. Zakir Hussain - (Alternative 3)

Question no.28

1.00

Bookmark

Who was the first British Governor General of India in 1833? (Appointed by British India Company)

- (A) Lord Dalhousie - (Alternative 4)

- (B) Lord Wellesley - (Alternative 1)
(C) Lord Warren Hengsting - (Alternative 3)
(D) **Lord William Bantant - (Alternative 2)**

Question no.29

1.00

Bookmark

Who is known as the father of the Panchayat constituency?

- (A) Lord Morley - (Alternative 1)
(B) **Lord Minto - (Alternative 2)**
(C) Lord Montague - (Alternative 4)
(D) Lord Chelmsford - (Alternative 3)

Question No.30

1.00

Bookmark

पोलैंड के मुद्रा का क्या नाम है ?

- (A) Polish Kina - (Alternative 1)
(B) **Polish Zloty - (Alternative 2)**
(C) Polish Dinar - (Alternative 4)
(D) Polish Balboa - (Alternative 3)

Question No.31

1.00

Bookmark

How many languages have been listed in the unhappiness of Indian constitution?

- (A) 18 - (Optional 2)
(B) **22 - (Optional 3)**
(C) 15 - (Optional 4)
(D) 14 - (Optional 1)

Question No.32

1.00

Bookmark

Where is the headquarters of National Home Bank (NHB) located?

- (A) Chennai - (Alternative 4)
(B) Mumbai - (Alternative 1)
(C) Kolkata - (Alternative 2)
(D) **New Delhi - (Alternative 3)**

Question No.33

1.00

Bookmark

What is the nuclear number of hydrogen?

- (A) 0 - (Optional 4)
(B) **1 - (Optional 2)**
(C) 2 - (Optional 3)
(D) 3 - (Optional 1)

Question No.34

1.00

Bookmark

What is the mass of the Earth?

- (A) 72.5×10^{27} kg - (Alternative 3)
- (B) 72.5×10^{24} kg - (Alternative 1)
- (C) 72.6×10^{24} kg - (Alternative 2)
- (D) 72.6×10^{27} kg - (Alternative 4)

Question No.35

1.00

Bookmark

_____ Respiratory is a process in which organisms generate energy in the absence of oxygen.

- (A) Underweight - (Alternative 4)
- (B) Autotrophic - (Optional 3)
- (C) Oxy - (Alternative 2)
- (D) Anacia - (Alternative 1)

Question No.36

1.00

Bookmark

What is the last formality without which no Union Bill can be made in our country?

- (A) President's Signature - (Alternative 4)
- (B) Signature of the Speaker of Lok Sabha - (Alternative 2)
- (C) Prime Minister's Signature - (Alternative 1)
- (D) Vice President's Consent - (Alternative 3)

Question No.37

1.00

Bookmark

What is the capital of Uttarakhand?

- (A) Lucknow - (Alternative 2)
- (B) Bhopal - (Alternative 3)
- (C) Agartala - (Alternative 1)
- (D) Dehradun - (Alternative 4)

Question No.38

1.00

Bookmark

Kanishka was the great king of which dynasty?

- (A) Barkjei - (Alternative 1)
- (B) Asaf Jahi - (Alternative 3)
- (C) Cushion - (Alternative 2)
- (D) Chalukya - (Alternative 4)

Question No.39

1.00

Bookmark

What is the capital of Bhutan?

- (A) Minsk - (Optional 1)

- (B) Vienna - (Alternative 4)
- (C) Kabul - (Alternative 2)
- (D) **Thimpu - (Alternative 3)**

Question No.40

1.00

Bookmark

What is the full form of "EPF"?

- (A) **Employees Provident Fund - (Alternative 1)**
- (B) Employees Priority Fund - (Alternative 4)
- (C) Employee Personal Fund - (Alternative 2)
- (D) Employees Provident Finance - (Alternative 3)

Question No.41

1.00

Bookmark

Who among the following was elected unopposed as the President of India?

- (A) VV Giri - (Alternative 2)
- (B) **Neelam Sanjiva Reddy - (Alternative 3)**
- (C) Giani Jail Singh - (Alternative 4)
- (D) Dr. S. Radhakrishnan - (Alternative 1)

Question No.42

1.00

Bookmark

"Portfolio System" implemented by whom?

- (A) Lord Mayo - (Alternative 3)
- (B) Lord William Bantant - (Alternative 2)
- (C) **Lord Canning - (Alternative 4)**
- (D) Lord Wellesley - (Alternative 1)

Question No.43

1.00

Bookmark

Ghoomar is folk dance

- (A) Jharkhand - (Alternative 1)
- (B) Uttarakhand - (Alternative 3)
- (C) Meghalaya - (Alternative 2)
- (D) **Rajasthan - (Alternative 4)**

Question no.44

1.00

Bookmark

What is the full name of RADAR?

- (A) **Radio Detection and Ranging - (Alternative 3)**
- (B) Radio Divergence and Ranging - (Alternative 4)
- (C) Radio Detection and Radiation - (Alternative 1)
- (D) Radial Distance And Ranging - (Alternative 2)

Question No.45

1.00

Bookmark

Multan Cricket Stadium is located in which of these countries?

- (A) Afghanistan - (Alternative 2)
- (B) **Pakistan - (Alternative 4)**
- (C) UAE - (Alternative 1)
- (D) Bangladesh - (Alternative 3)

Question No.46

1.00

Bookmark

The working hours of the members of the Rajya Sabha are:

- (A) **6 years - (Optional 4)**
- (B) 5 years - (Optional 3)
- (C) 4 years - (Optional 2)
- (D) 2 years - (Optional 1)

Question no.47

1.00

Bookmark

Kidambi Srikanth is related to which sport?

- (A) **Badminton - (Alternative 4)**
- (B) Tennis - (Alternative 3)
- (C) Hockey - (Alternative 2)
- (D) Cricket - (Alternative 1)

Question no.48

1.00

Bookmark

Members of the Union Public Service Commission

- (A) **Appointed by the President - (Alternative 3)**
- (B) Elected by Logo - (Alternative 1)
- (C) Elected by Parliament - (Alternative 2)
- (D) Are appointed by the Home Ministry - (Alternative 4)

Question No.49

1.00

Bookmark

Tungabhadra Dam is situated-

- (A) Goa - (Alternative 4)
- (B) Kerala - (Alternative 2)
- (C) **Karnataka - (Alternative 1)**
- (D) Maharashtra - (Alternative 3)

Question No.50

1.00

Bookmark

Ice crystals are called rain

- (A) Fog - (Alternative 3)
- (B) **Ice - (Alternative 2)**
- (C) Rain - (Alternative 1)
- (D) Relative Humidity - (Alternative 4)

Question No.51

1.00

Bookmark

Read the following logic and answer the given question.

A @ B is the mother of A, B.

A # B is the father of A, B.

A \$ B is A, B's brother.

A% B is the sister of A, B.

Which of the following shows that P is R's grandmother?

- (A) P # Q # R - (Alternative 4)
(B) P% Q # R - (Alternative 2)
(C) P # Q @ R - (Optional 3)
(D) **P @ Q @ R - (Optional 1)**

Question No.52

1.00

Bookmark

In this question two statements and two conclusions i and ii have been given, assuming that the statements given in the statements are true and to decide which conclusions are logical in relation to the statements?

Statement. All eyes are ears. Some ears have lips

Conclusion i) There is some eye lip.

ii) There is no eye lip.

Select from the following options,

- (A) only conclusions i is logical.
(B) The only conclusion ii is logical.
(C) either i or ii conclusion is rational.
(D) neither i nor ii conclusion is rational.
(E) i and ii both conclusions are rational.
(A) A - (Alternative 1)
(B) **C - (Alternative 3)**
(C) D - (Alternative 4)
(D) B - (Alternative 2)

Question No.53

1.00

Bookmark

In this question three statements and related four conclusions have been given, assuming that the statements given in the statements are true and to decide which conclusions are logical in relation to the statements?

Statement. Some girls are players. All boys are player. Some players are champions.

Conclusion: i) Some boys are girls.

ii) Some boys are players.

iii) There are some champion girls.

iv) There are some champion boys.

- (A) Only i) - (Optional 1)
(B) **Only ii) - (Optional 4)**
(C) I only), ii) and iii) - (alternative 2)
(D) li only), iii) and iv) - (optional 3)

Question No.54

1.00

Bookmark

Choose the next number in the following category
5, 11, 25, 63, 173,?

- (A) 551 - (Alternative 4)
(B) 596 - (Alternative 2)
(C) 692 - (Optional 1)
(D) **499 - (Optional 3)**

Question no.55

1.00

Bookmark

In a certain code language, if MONTH is written TRSMY, how would PLACE be written in the same code language?

- (A) PTEIG - (Optional 4)
(B) PTEGI - (Optional 1)
(C) QUFKH - (Optional 3)
(D) **QUFJH - (Optional 2)**

Question no.56

1.00

Bookmark

Carefully read the given information and answer the given questions.

Abi, Banu, Charu, Dev and Isha are sitting on the side of the north side (not necessarily in this order). All five lovers like five different types of sweets. Such as laddoo, barfi, jamun, katli and peda

- i. The one who likes the pulse is sitting in the middle of the line.
ii. Charu and Banu are sitting on either side of the tree.
iii. Banu likes laddoo and God does not sit at any end.
iv. Barfi, who likes Barfi, is sitting in the third place on the left side of the berries.
v. People who like berries sit on the extreme ends of the line and Abe Jamsun does not like.

Who likes katli?

- (A) Isha - (Alternative 3)
(B) Dev - (Alternative 1)
(C) **Abe - (Alternative 2)**
(D) Charu - (Alternative 4)

Question no.57

1.00

Bookmark

Select the next number in the following category
173, 159, 180, 166, 187,?

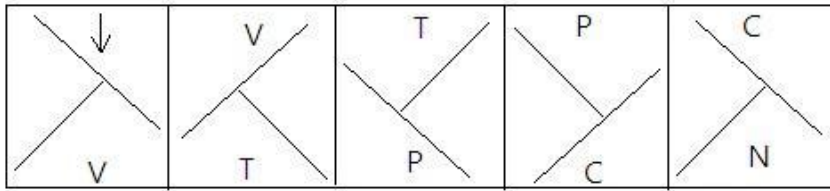
- (A) 182 - (Alternative 4)
(B) 194 - (Optional 1)
(C) 179 - (Alternative 2)
(D) **173 - (Optional 3)**

Question no.58

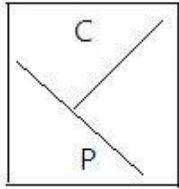
1.00

Bookmark

Select the appropriate picture to come forth in the given series with the choices.

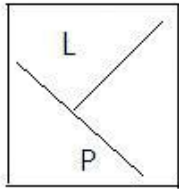


(A)



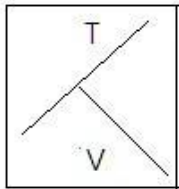
- (Optional 1)

(B)



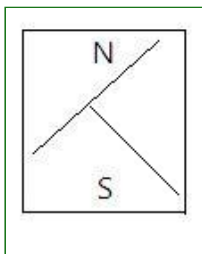
- (Optional 3)

(C)



- (Optional 4)

(D)



- (Optional 2)

Question No.59

1.00

Bookmark

Choose the correct image of the given question from the given options.

SCREEN

(A)

SCREEN

- (Optional 3)

(B)

SCREEN

- (Optional 1)

(C)

NEEDS - (Optional 2)

(D)

SCREEN

- (Optional 4)

Question No.60

1.00

Bookmark

Four of the following five are similar in a certain way, which creates a group.
Which of these is not related to this group?

Sleep, Nap, Slumber, Doze, Alive

- (A) Nap - (Alternative 3)
(B) Sleep - (Alternative 4)
(C) Slumber - (Alternative 1)
(D) **Alive - (Alternative 2)**

Question No.61

1.00

Bookmark

In a certain code language, if ABUSE is written in ZYFHV, how will INSULT be written in the same code language?

- (A) RMHFKG - (Alternative 2)
(B) SOHFLI - (Optional 4)
(C) **RMHFOG - (Optional 1)**
(D) SOHFKI - (Optional 3)

Question No.62

1.00

Bookmark

Replacing the question mark with the option that adheres to the logic applied in the first pair.

Pathology: Diseases :: Paleontology: ??

- (A) Algae - (Alternative 4)
(B) Insects - (Alternative 3)
(C) Diet - (Alternative 1)
(D) **Fossils - (Alternative 2)**

Question No.63

1.00

Bookmark

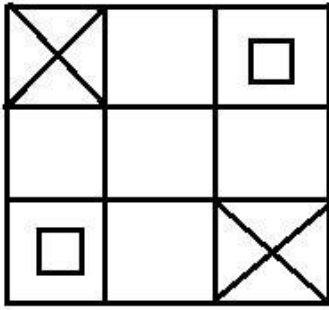
B is the mother of M and A. Z is the son-in-law of O who is Y's husband. Y is the sister of A. How is B related to O?

- (A) Son - (Alternative 2)
(B) **Wife - (Optional 3)**
(C) Mother - (Alternative 4)
(D) Husband - (Alternative 1)

Question No.64

1.00

How many classes are there in the given picture?



- (A) 14 - (Optional 3)
 (B) 18 - (Optional 2)
 (C) 16 - (Optional 1)
 (D) 12 - (Optional 4)

Question No.65

1.00

Bookmark

Carefully read the given information and answer the given questions.

Abi, Banu, Charu, Dev and Isha are sitting on the side of the north side (not necessarily in this order). All five lovers like five different types of sweets. Such as laddoo, barfi, jamun, katli and peda

- i. The one who likes the pulse is sitting in the middle of the line.
- ii. Charu and Banu are sitting on either side of the tree.
- iii. Banu likes laddoo and God does not sit at any end.
- iv. Barfi, who likes Barfi, is sitting in the third place on the left side of the berries.
- v. People who like berries sit on the extreme ends of the line and Abe Jamsun does not like.

Who is sitting at the right third place of Charu?

- (A) **Which likes berries. - (Optional 4)**
 (B) Who likes barfi - (Optional 1)
 (C) Who likes kathal - (Optional 3)
 (D) Who likes laddoo - (Optional 2)

Question No.66

1.00

Bookmark

In this question, a statement and the two conclusions related to them are given in the form of i and ii, assuming that the statements given in the statements to be true are to make sure that the conclusions regarding the statements are logical?

Statement. Weight is proportional to height.

Conclusion

- i) If the load increases, then the height remains undone.
- ii) If height increases, then the load remains undone.

Choose the right one from the following options.

- (A) The only conclusion i correct is.
 (B) Only conclusion ii is correct.
 (C) Either the conclusions i or ii are correct.
 (D) Neither conclusion nor ii is correct.
 (E) Both i and ii findings are correct

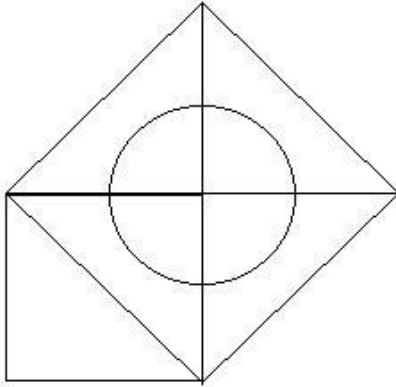
- (A) A - (Alternative 1)
- (B) B - (Alternative 2)
- (C) E - (Alternative 4)
- (D) D - (Alternative 3)

Question No.67

1.00

Bookmark

How many right-angled triangles can be made from given figures?



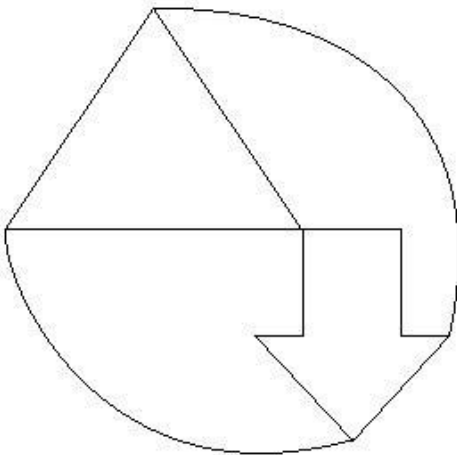
- (A) 7 - (Optional 4)
- (B) 4 - (Optional 3)
- (C) 9 - (Optional 2)
- (D) 5 - (Optional 1)

Question No.68

1.00

Bookmark

How straight lines are there in the given picture?



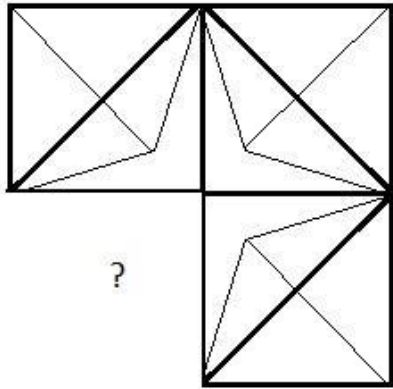
- (A) 15 - (Optional 3)
- (B) 9 - (Optional 1)
- (C) 11 - (Optional 4)
- (D) 7 - (Optional 2)

Question No.69

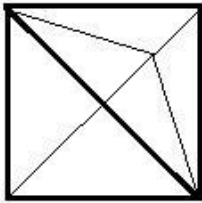
1.00

Bookmark

Select the correct option which will complete the format of the given image.

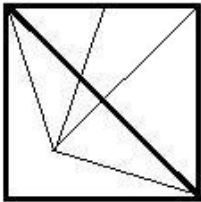


(A)



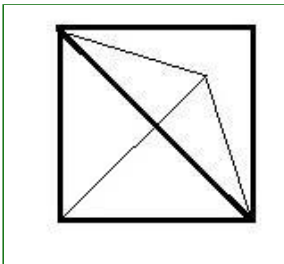
- (Optional 2)

(B)



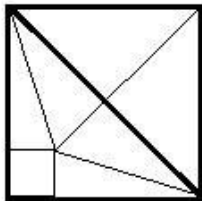
- (Optional 1)

(C)



- (Optional 3)

(D)



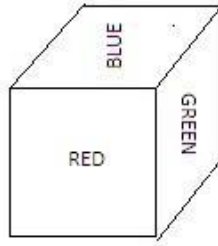
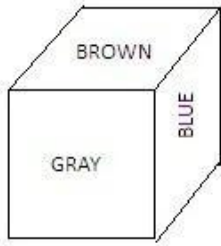
- (Optional 4)

Question No.70

1.00

Bookmark

In the given picture, each face of the dice is painted with red (green), green, gray (blue), brown (orange) and orange (ORANGE). What color is painted against the orange color?



- (A) Green (GREEN) - (Optional 1)
- (B) **BLUE - (Alternative 3)**
- (C) Red (RED) - (Alternative 2)
- (D) Gray - (Alternative 4)

Question No.71

1.00

Bookmark

Select the next number in the following category
14, 31, 59, 121, 239, ?

- (A) 471 - (Alternative 2)
- (B) 478 - (Optional 4)
- (C) 468 - (Optional 3)
- (D) **481 - (Optional 1)**

Question No.72

1.00

Bookmark

If a mirror is placed on the shaded line, which of the following options is the correct image of the given shape?



- (A) **AYNEK** - (Optional 1)
- (B) **AYNEK** - (Optional 4)
- (C) **KENYA** - (Optional 2)
- (D)

Question No.73

1.00

Bookmark

Referring to a girl, a woman says, "She is the daughter of the daughter of the mother of my mother's daughter, how is the girl related to the woman?"

- (A) Aunt - (Alternative 2)
(B) Grandma - (Alternative 4)
(C) **Granddaughter - (Alternative 3)**
(D) Daughter - (Alternative 1)

Question No.74

1.00

Bookmark

In this question, four statements are given in relation between letters, three related findings i, ii and iii have been given. When you consider the statements as truth, decide which conclusions are completely true in relation to the statements.

Statement. $A \leq M < Y$; $G < L > A \geq D$; $D > I = N$

findings

i) $G > n$

ii) $L >$

niiii) $L > M$

- (A) All. - (Optional 4)
(B) Only i) and iii) - (Optional 1)
(C) **Only ii) - (Optional 3)**
(D) Only i) and ii) - (Optional 2)

Question No.75

1.00

Bookmark

Replacing the question mark with the option that adheres to the logic applied in the first pair. GL:

QV :: DM: ??

- (A) **NW - (Alternative 1)**
(B) XP - (Alternative 4)
(C) VO - (Optional 2)
(D) XO - (Optional 3)

Question No.76

1.00

Bookmark

Replacing the question mark with the option that adheres to the logic applied in the first pair.

Beautician: Parlour :: Mechanic: ??

- (A) **Garage - (Alternative 2)**
(B) Cockpit - (Alternative 4)
(C) Laboratory - (Alternative 3)
(D) Cabin - (Alternative 1)

Question No.77

1.00

Bookmark

Replace the question mark with the option that follows the applied logic in the first pair. 4232: 11 :: 1291: ??

- (A) 13 - (Optional 4)
- (B) 15 - (Optional 3)
- (C) 21 - (Optional 1)
- (D) 14 - (Optional 2)

Question No.78

1.00

Bookmark

Four of the following five are similar in a certain way, which creates a group. Which of these is not related to this group?

P, T, H, X, R

- (A) P - (Alternative 2)
- (B) X - (Alternative 4)
- (C) T - (Optional 3)
- (D) R - (Optional 1)

Question No.79

1.00

Bookmark

In this question the relationship between the various elements of the statement is shown. The statement has two conclusions.

Statement. $K = I < N \leq D < E > R > A$

Conclusion.

i) $K < E$

ii) $E > A$

Select from the following options.

- (A) The only i conclusion is correct.
 - (B) Only ii conclusions are correct.
 - (C) either i either ii conclusion is correct.
 - (D) neither i nor ii conclusion is correct.
 - (E) i and ii both conclusions are correct.
- (A) B - (Alternative 2)
 - (B) C - (Alternative 3)
 - (C) E - (Alternative 4)
 - (D) A - (Alternative 1)

Question No. 80

1.00

Bookmark

Select the next number in the following category
12, 15, 24, 51, 132, ?

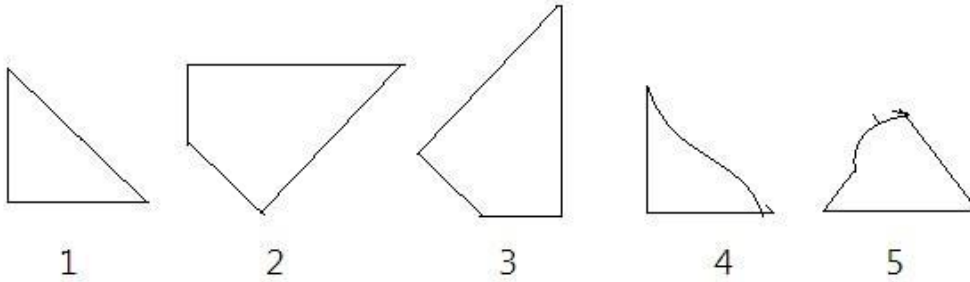
- (A) 345 - (Alternative 2)
- (B) 294 - (Optional 1)
- (C) 375 - (Alternative 4)
- (D) 268 - (Optional 3)

Question No.81

1.00

Bookmark

Select the correct option from the given options that can make a full square. (3 of the 5 images below)



- (A) 1,4,5 - (Alternative 2)
 (B) 2,3,4 - (Optional 4)
 (C) 1,2,3 - (Optional 1)
 (D) 3,4,5 - (Optional 3)

Question No.82

1.00

Bookmark

Read the information given carefully and answering the questions given are
 Abi, Banu, Charu, Dev and Isha sitting on the side of five friends (not necessarily in the same order). All five lovers like five different types of sweets. Like Laddo, Barfi, Jamun, Katli and Peda.

1. The one who likes the pulse is sitting in the middle of the line.
2. Charu and Banu Padda sit on one side of the person who likes.
3. Banu likes laddoo and God does not sit at any end.
4. Barfi, who likes Barfi, is sitting in the third place on the left side of the berries.
5. People who like Zaman sit at the extreme end of the line and Abhi Jamun does not like.

According to the given statement, which of these statements is true?

- (A) Abi and Laddoo sits on the last end of the choice - (Alternative 3)
 (B) Dev is sitting between Abi and Charu - (Alternative 2)
 (C) Charu likes Barfee - (Alternative 1)
 (D) Isha likes Kathal - (Alternative 4)

Question no.83

1.00

Bookmark

In this question, a passage and a statement related to it have been given. Read carefully the verse and review the statement based on it.

Delhi, which is one of India's capital and one of the largest cities in the world, is undergoing severe crisis, due to its high level of urbanization, increasing population and high levels of pollution. Studies have proven that Are the biggest factors of pollution used for industrial and domestic use? And due to their use, people here emit large quantities of nitrogen oxides (NOx), ozone (O3), black carbon (BC) and microorganisms (PM).

According to the 2015 Global Burden of Disease report, there were 1.09 million deaths due to PM 2.5 in India. Air pollution was included as one of the 10 biggest threats to health. According to the World Health Organization, 37 cities of India are among 100 worst polluted cities in the world, where PM10 was found to be the highest ever. For the production of onoos, together with sunlight and heat, nitrogen oxides (NOx) and organic compounds (VOCs) are needed simultaneously. Therefore, in the summer months, ozone is produced in large quantities in the cities.

Statement: Ozone does not arise more than a boundary on the ground in the summer months in cities.

Select the most suitable from the following options

A-statement is absolutely true
B-statement is probably true
C-statement can not be reviewed
D-statement is completely false

- (A) C - (Alternative 3)
(B) A - (Alternative 1)
(C) B - (Alternative 2)
(D) D - (Alternative 4)

Question no.84

1.00

Bookmark

In this question, a passage and a statement related to it have been given. Read carefully the verse and review the statement based on it.

Delhi, which is one of India's capital and one of the largest cities in the world, is undergoing severe crisis, due to its high level of urbanization, increasing population and high levels of pollution. Studies have proven that Are the biggest factors of pollution used for industrial and domestic use? And due to their use, people here emit large quantities of nitrogen oxides (NO_x), ozone (O₃), black carbon (BC) and microorganisms (PM).

According to the 2015 Global Burden of Disease report, there were 1.09 million deaths due to PM 2.5 in India. Air pollution was included as one of the 10 biggest threats to health. According to the World Health Organization, 37 cities of India are among 100 worst polluted cities in the world, where PM₁₀ was found to be the highest ever. For the production of ozoos, together with sunlight and heat, nitrogen oxides (NO_x) and organic compounds (VOCs) are needed simultaneously. Therefore, in the summer months, ozone is produced in large quantities in the cities.

Statement: Air pollution is one of the top 10 factors affecting health in India.

Select the most suitable from the following options

A-statement is absolutely true
B-statement is probably true
C-statement can not be reviewed
D-statement is completely false

- (A) A - (Alternative 1)
(B) B - (Alternative 2)
(C) D - (Alternative 4)
(D) C - (Alternative 3)

Question no.85

1.00

Bookmark

Five to four in the following are similar in a certain way, which create a group.

Which of these is not related to this group?

ZWT, NKH, ROL, PMJ, YWU

- (A) ROL - (Optional 1)
(B) YWU - (Optional 3)
(C) PMJ - (Optional 4)
(D) ZWT - (Optional 2)

Question no.86

1.00

Bookmark

In one box, three different types of old coins are in the ratio of 7: 6: 8; the value of old coins is Rs. 1, 5 rupees and 10 rupees respectively. If the total value of coins in the box is 936, then tell the number of old coins of 5 rupees.

- (A) 48 - (Optional 3)

- (B) 52 - (Alternative 2)
- (C) 46 - (Optional 1)
- (D) 50 - (Optional 4)

Question No.87

1.00

Bookmark

Anil distributed 500 gifts among 4 children. The first part of the child is twice the portion of the other child, three times the size of the third child and four times the fourth child's share. Tell the number of total gifts received by the first and the second child.

- (A) 380 - (Optional 3)
- (B) 300 - (Optional 1)
- (C) **360 - (Optional 4)**
- (D) 280 - (Alternative 2)

Question no.88

1.00

Bookmark

Make simple

$$(7^4)^2 \times \frac{1}{343^2} \times 7 + 17 = ?$$

- (A) **360 - (Optional 3)**
- (B) 380 - (Optional 4)
- (C) 340 - (Alternative 2)
- (D) 320 - (Alternative 1)

Question No.89

1.00

Bookmark

Marilyn is able to decide at a speed of 9/10 (10/10) at a speed of more than 15 minutes from the time it takes in a normal distance. Calculate the normal time it takes in determining a certain distance?

- (A) 115 mins - (Optional 1)
- (B) 145 mins - (Optional 4)
- (C) **135 mins - (Alternative 2)**
- (D) 85 mins - (Optional 3)

Question No.90

1.00

Bookmark

Make simple

$$\sqrt{20.25} + \sqrt{75.69} + 8.7 = ?$$

- (A) 21.5 - (Optional 2)
(B) 21.7 - (Optional 3)
(C) 21.9 - (Optional 4)
(D) 21.3 - (Optional 1)

Question No.91

1.00

Bookmark

The amount of Rs 5400 is given at the rate of 8% on ordinary interest. If after 5 years the amount was withdrawn and half of the total amount was invested in the stock exchange. Show the amount remaining (in rupees)

- (A) 3480 - (Optional 1)
(B) 3680 - (Optional 3)
(C) 3580 - (Optional 2)
(D) 3780 - (Optional 4)

Question No.92

1.00

Bookmark

A shopkeeper sells a product in Rs.1386 and earns 12.5% profit. Tell the amount that is equal to half of the purchase price of the product.

- (A) Rs.516 - (Optional 2)
(B) Rs.716 - (Optional 4)
(C) Rs.616 - (Optional 3)
(D) Rs.816 - (Optional 1)

Question No.93

1.00

Bookmark

Full Cetrfl pieces of glass class 729 Cm^2 is. Which is placed above a table. The width between the table and the glass piece is 9 cm. Tell the length of the table.

- (A) 43 cm - (Alternative 2)
(B) 45 cm - (Optional 3)
(C) 47 cm - (Alternative 4)
(D) 41 cm - (Optional 1)

Question No.94

1.00

Bookmark

The difference between compound interest and simple interest amount received in two years on the amount of money is Rs 44, if the interest rate is 4% per year, then calculate the amount invested.

- (A) 27500 - (Optional 1)

- (B) 25500 - (Optional 4)
- (C) 28500 - (Alternative 2)
- (D) 26500 - (Optional 3)

Question No.95

1.00

Bookmark

A person travels from the hostel to the college with a speed of 36kmph from cycling and reaches a 7-minute delay. If he runs a bike with a speed of 45kmph then it reaches 5 minutes. Describe the distance between the hostel and the college.

- (A) 42 km - (Alternative 2)
- (B) 32 km - (Optional 1)
- (C) 39 km - (Optional 3)
- (D) **36 km - (Alternative 4)**

Question No.96

1.00

Bookmark

The station master decides that the length and breadth of the digital board should be increased by 6% and 6% respectively. Find out the total change in the area.

- (A) **0.36% reduction - (Optional 3)**
- (B) Lack of 0.24% - (Optional 1)
- (C) 0 - 24% increase - (Alternative 2)
- (D) 0.36% increase - (Optional 4)

Question No.97

1.00

Bookmark

A bulb producing company found 11% of the total product defective. If the total number of non-defective products is 5607, then tell the number of total defective products.

- (A) **693 - (Alternative 4)**
- (B) 643 - (Optional 1)
- (C) 983 - (Alternative 2)
- (D) 463 - (Optional 3)

Question No.98

1.00

Bookmark

The average weight of 101 notebooks placed in a box is 10.1kg. When a new notebook is placed in the box then the average is 10.2kg. Tell the weight of the new notebook.

- (A) **20.3 kg - (Optional 1)**
- (B) 20.5 kg - (Optional 2)
- (C) 19.7 kg - (Optional 4)
- (D) 20.1 kg - (Optional 3)

Question No.99

1.00

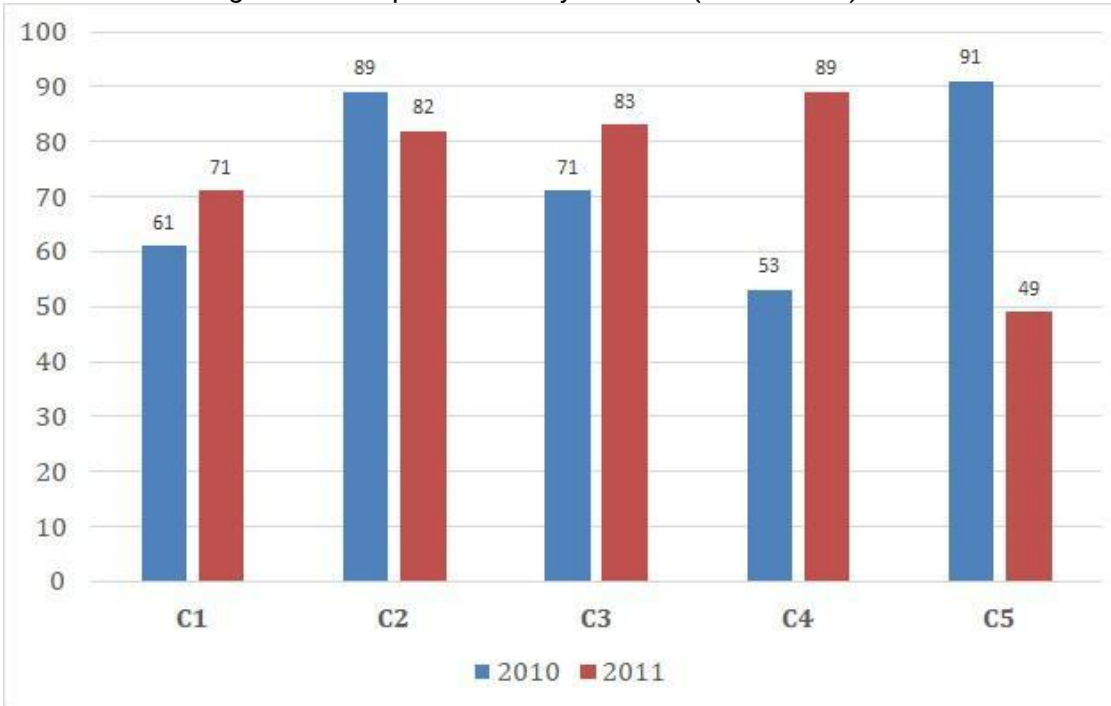
Bookmark

Instructions.

Study the graph below and answer the question based on it?

The sales of books (in thousand) of books issued in two consecutive years of 2010 and 2011 of five branches of a publishing company (C1, C2, C3, C4 and C5) have been given.

Find out the average of all companies in the year 2010 (in thousand)?



- (A) 75 - (Alternative 4)
(B) 72 - (Alternative 1)
(C) 73 - (Alternative 2)
(D) 74 - (Optional 3)

Question No.100

1.00

Bookmark

The ANM English based company has 511 men and 511 female employees. The average productivity of all employees is 61 calls per day. 61 call attendants are provided daily by a male employee. What will be the average of calls made by a female employee every day?

- (A) 63 - (Optional 3)
(B) 59 - (Optional 1)
(C) 61 - (Alternative 2)
(D) 65 - (Alternative 4)

Question No.101

1.00

Bookmark

One person travels at a speed of 24kmph, 36kmph and 72km on the surface of an equilateral triangle and assess its average speed.

- (A) 45kmph - (Optional 4)
(B) 24kmph - (Alternative 2)
(C) 30 kmph - (Optional 3)
(D) 36 kmph - (Optional 1)

Question No.102

1.00

Bookmark

Sandy donated 13% of her salary to an organization working for the blind people, 12% of her salary to the orphanage, 14% of her salary, the institution working for the physically challenged people, and 16% of her salary The institution helping the medical aid The remaining amount of salary is

deposited in the bank for Rs 24345 monthly expenditure. Find out the amount donated in the orphanage.

- (A) 6452 - (Optional 1)
- (B) 6942 - (Alternative 4)
- (C) 6782 - (Optional 3)
- (D) **6492 - (Alternative 2)**

Question No.103

1.00

Bookmark

The proportion of the salary of Hakim, Kristo and Ganesh is 3: 5: 7, respectively, if Ganesh is getting Rs.524 more than the hakim. What is Christo's salary?

- (A) 545 - (Optional 4)
- (B) 610 - (Alternative 2)
- (C) 685 - (Optional 3)
- (D) **655 - (Optional 1)**

Question No.104

1.00

Bookmark

What will be the height of the cubes of $11\sqrt{3}$, which is melted by making the cuboid? If the length of the cuboid is equal to the arm of the cube, and the cuboid is 5.5 cm.

- (A) **22 cm - (Optional 1)**
- (B) 20 cm - (Optional 4)
- (C) 18 cm - (Optional 3)
- (D) 24 cm - (Alternative 2)

Question No.105

1.00

Bookmark

Jeno scored 65 points out of 80 in French, 89 out of 100 in English, 58 out of 70 in Spanish, and 40 out of 50 in Japanese. What was the total percentage achieved by him?

- (A) 0.82 - (Optional 3)
- (B) 0.86 - (Optional 2)
- (C) 0.8 - (Optional 4)
- (D) **0.84 - (Optional 1)**

Question No.106

1.00

Bookmark

142! In the trailing Zeros, let us know.

- (A) 36 - (Optional 4)
- (B) 30 - (Optional 1)
- (C) **34 - (Optional 3)**
- (D) 32 - (Alternative 2)

Question No.107

1.00

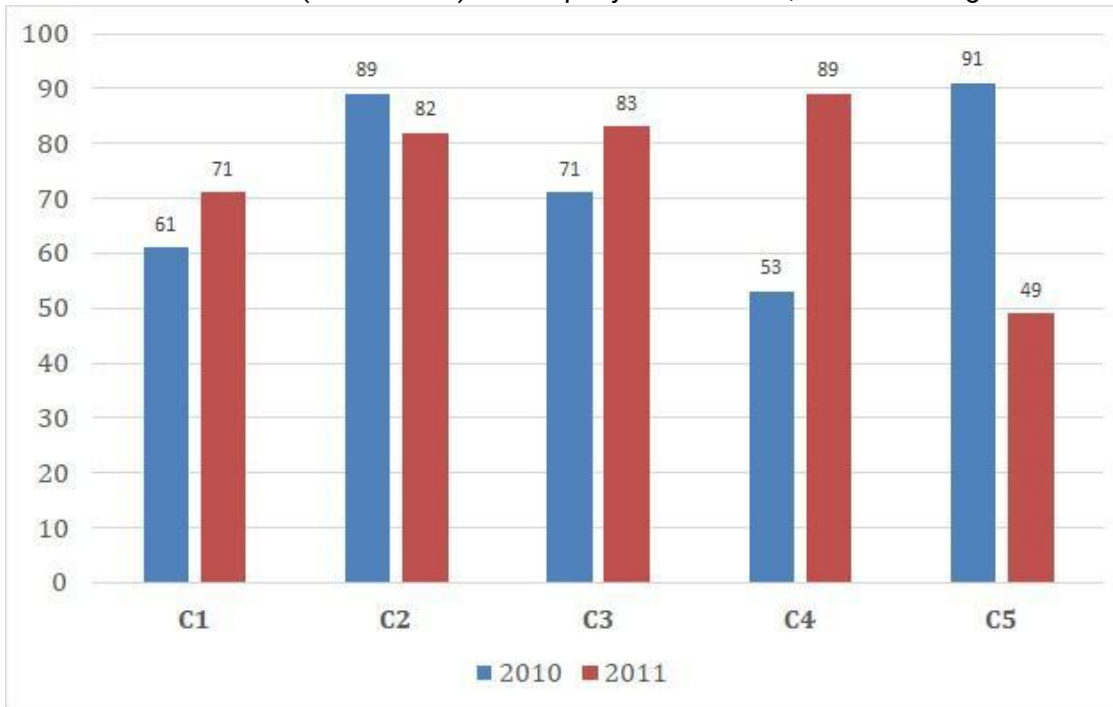
Bookmark

Instructions.

Study the graph below and answer the question based on it?

The sales of books (in thousand) of books issued in two consecutive years of 2010 and 2011 of

five branches of a publishing company (C1, C2, C3, C4 and C5) have been given. Find out the total sales (in thousand) of company branches C1, C3 and C5 together in two years?



- (A) 425 - (Alternative 2)
 (B) 427 - (Optional 4)
 (C) 426 - (Optional 3)
 (D) 423 - (Optional 1)

Question No.108

1.00

Bookmark

Make simple

$$\frac{1}{12} \div \frac{1}{12} \div \frac{1}{12} \div \frac{1}{12} \div \frac{1}{12} = ?$$

- (A) 1287 - (Optional 4)
 (B) 1278 - (Alternative 2)
 (C) 1728 - (Optional 1)
 (D) 1782 - (Alternative 3)

Question No.109

1.00

Bookmark

When a number is divided by 72, the remainder remains 8. When the same number is divided by 9, what will be the remainder?

- (A) 4 - (Optional 3)
 (B) 7 - (Optional 2)

(C) **8 - (Optional 4)**

(D) 2 - (Optional 1)

Question no.110

1.00

Bookmark

How many ways can the 448 mobile phones be distributed in the same class?

(A) **14 - (Optional 2)**

(B) 12 - (Optional 1)

(C) 16 - (Optional 3)

(D) 18 - (Optional 4)

Question No.111

1.00

Bookmark

If the radius of a circle becomes nine times, how much of its perimeter will be the perimeter of the perimeter?

(A) 11 - (Optional 4)

(B) **9 - (Optional 2)**

(C) 8 - (Optional 1)

(D) 10 - (Optional 3)

Question no.112

1.00

Bookmark

Selling an item for 2500 rupees gets 11% more profit from the loss obtained if the same item is sold at the same rate for 1234 rupees. Know the purchase price of that item?

(A) Rs.1843 - (Optional 3)

(B) **Rs.1834 - (Optional 1)**

(C) Rs.1348 - (Optional 4)

(D) Rs.1384 - (Optional 2)

Question No.113

1.00

Bookmark

266 m A train takes 67 seconds to cross the long bridge. If the same train takes 29 seconds to cross a board, then tell the length of the train.

(A) 200m - (Optional 1)

(B) 205 m - (Alternative 4)

(C) **203m - (Optional 3)**

(D) 215 m - (Alternative 2)

Question No.114

1.00

Bookmark

If a shopkeeper hikes the purchasing value of a Vastu by 36% and holds a value of 36% on his sale, then he should know the total percentage gain or loss he has received?

(A) **12.96% Loss - (Optional 4)**

(B) 11.56% Loss - (Optional 3)

(C) 11.56% profit - (Optional 1)

(D) 12.96% profit - (Optional 2)

Question No.115

1.00

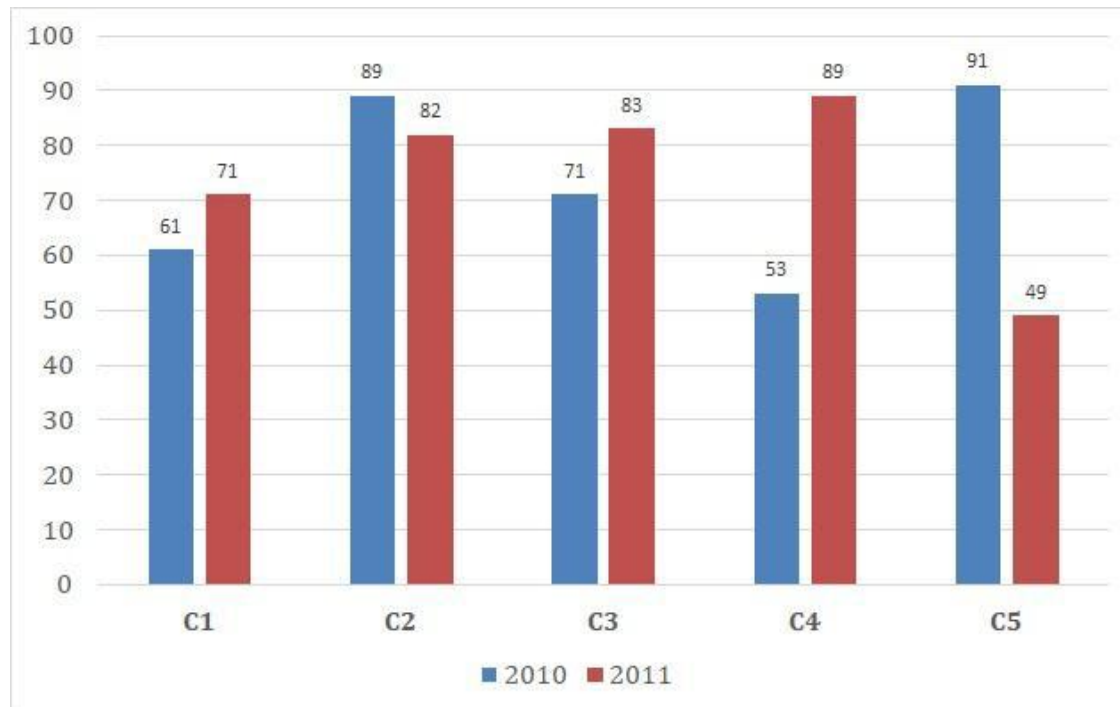
Bookmark

Instructions.

Study the graph below and answer the question based on it?

Two consecutive years of five branches (C1, C2, C3, C4 and C5) of a publishing company have been given in the sale of books (in thousandths) in 2010 and 2011.

Find the ratio of total sales in the two years of branch C2 and the ratio of total sales in both years of branch C4?



- (A) 142: 171 - (Optional 3)
- (B) 182: 163 - (Optional 1)
- (C) 171: 142 - (Optional 4)
- (D) 163: 182 - (Optional 2)

Question no.116

1.00

Bookmark

Make simple

$$468 \div \left\{ \frac{3}{4} \left[\frac{16}{15} \right] - \frac{2}{3} \right\} = ?$$

- (A) 3150 - (Optional 1)
- (B) 5310 - (Optional 3)
- (C) 5130 - (Optional 4)
- (D) 3510 - (Optional 2)

Question No.117

1.00

Bookmark

At the rate of any compound interest rate, it doubles itself in 3 years, in how many years it will be 128 times its own?

- (A) 25 Years - (Optional 4)
- (B) 23 years - (Optional 3)
- (C) **21 Years - (Alternative 2)**
- (D) 19 Years - (Optional 1)

Question no.118

1.00

Bookmark

Tell the product of two numbers, whose smallest equator (LCM) 65 and the maximum consonant (HCF) are 8.

- (A) 480 - (Alternative 4)
- (B) 420 - (Alternative 2)
- (C) 360 - (Optional 3)
- (D) **520 - (Optional 1)**

Question No.119

1.00

Bookmark

The ratio of Vicky and Rakesh's movements in distance of 1000 km is 29: 23. Show the ratio of their walks.

- (A) **23:29 - (Optional 2)**
- (B) 24:29 - (Optional 1)
- (C) 29:31 - (Optional 4)
- (D) 27:29 - (Optional 3)

Question No.120

1.00

Bookmark

There are 10 rings in a gift box. The average weight of the first four rings is 37gms and the remaining weight of the 6 thumbs is 38gms. Tell the average weight of the full rings. (In grams)

- (A) 37.8 - (Optional 4)
- (B) 37.2 - (Optional 1)
- (C) **37.6 - (Optional 3)**
- (D) 37.4 - (Optional 2)