



**RPF SI\_06-**



**Jan-2019\_**

**Shift\_1**

Roll No:

Registration No:

Name:

Date: **06-Jan-2019 - 1st Shift**

Examination: **Online Examination - SI**

**Section 1 - Online Examination**

**Question No.1**

1.00

Bookmark

Who gave the slogan 'Give me blood, I will give you freedom'?

- (A)  Jawaharlal Nehru - (Alternative 1)
- (B)  Mahatma Gandhi - (Alternative 2)
- (C)  **Subhash Chandra Bose - (Alternative 3)**
- (D)  Bal Gangadhar Tilak - (Alternative 4)

**Question No.2**

1.00

Bookmark

Of these, who are not the Deputy Governor of RBI?

- (A)  **V.K. Sharma - (Alternative 2)**
- (B)  V. Liladhar - (Alternative 4)
- (C)  MK. Jain - (Alternative 1)
- (D)  BP Kanungu - (Alternative 3)

**Question No.3**

1.00

Bookmark

\_\_\_\_\_ is a process of energy production with the help of respiratory oxygen.

- (A)  **Aerobic (aerobic) - (Alternative 4)**
- (B)  Anaerobic - (Alternative 1)
- (C)  Autotrophic - (Alternative 2)
- (D)  Infertility (heterotrophic) - (Optional 3)

**Question No.4**

1.00

Bookmark

Sunil Chhetri is related to which game / sports?

- (A)  **Football - (Alternative 3)**
- (B)  Volleyball - (Alternative 4)
- (C)  Basketball - (Alternative 2)
- (D)  Baseball - (Alternative 1)

**Question No.5**

1.00

Bookmark

Which of the following crop is not grass?

- (A)  **Almond - (Alternative 2)**
- (B)  SubA - (Alternative 3)
- (C)  Bamboo - (Alternative 1)

(D)  Alfalfa - (Alternative 4)

**Question No.6**

1.00

Bookmark

Who won men's singles title at the 2018 US Open?

- (A)  Roy Emerson - (Alternative 4)
- (B)  **Novak Djokovic - (Alternative 3)**
- (C)  Rafael Nadal - (Alternative 2)
- (D)  Roger Federer - (Optional 1)

**Question No.7**

1.00

Bookmark

Which of the following years has been declared by the United Nations as the International Year of Forests?

- (A)  2015 - (Optional 4)
- (B)  2009 - (Optional 1)
- (C)  **2011 - (Optional 3)**
- (D)  2008 - (Alternative 2)

**Question No.8**

1.00

Bookmark

As the droplets of water are said to be free of moisture

- (A)  Humidity - (Alternative 1)
- (B)  Bala - (Alternative 3)
- (C)  **Rain - (Alternative 4)**
- (D)  Fog - (Alternative 2)

**Question No.9**

1.00

Bookmark

Which organization was replaced by the Planning Commission of India?

- (A)  Regional Council - (Alternative 3)
- (B)  **Policy Commission - (Alternative 2)**
- (C)  Energy and Resources Institute - (Alternative 4)
- (D)  Securities and Exchange Board of India - (Alternative 1)

**Question No.10**

1.00

Bookmark

What is the currency of Malaysia?

- (A)  Malaysian Dinar - (Alternative 4)
- (B)  Malaysian Dollars - (Alternative 1)
- (C)  Malaysian Euro - (Alternative 2)
- (D)  **Malaysian Ringgit - (Alternative 3)**

**Question No.11**

1.00

Bookmark

Where is the "National Management Institute (NIBM)" located?

- (A)  Nagpur - (Alternative 2)
- (B)  Mumbai - (Alternative 1)
- (C)  **Pune - (Alternative 4)**
- (D)  Hyderabad - (Alternative 3)

**Question No.12**

1.00

Bookmark 

What is the full form of KCL in electricity?

- (A)  Kirchoff's Conductive Rule - (Optional 3)
- (B)  Kirchoff's Converter Rule - (Optional 4)
- (C)  Kirchoff's Circuit Rule - (Alternative 2)
- (D)  **Kirchoff's stream rule - (Optional 1)**

**Question No.13**

1.00

Bookmark 

Which freedom fighter is popularly known as Lok Nayak?

- (A)  Jyotirao Phule - (Alternative 1)
- (B)  Jatindranath Das - (Alternative 3)
- (C)  Jyotiba - (Alternative 2)
- (D)  **Jaiprakash Narayan - (Alternative 4)**

**Question No.14**

1.00

Bookmark 

Has the President of India declared so far a financial emergency?

- (A)  **Never Announced - (Alternative 4)**
- (B)  Yes, only once - (Optional 1)
- (C)  Yes, two times - (Optional 2)
- (D)  Yes, three times - (Optional 3)

**Question No.15**

1.00

Bookmark 

When was the Lahore session held?

- (A)  1820 - (Alternative 2)
- (B)  **1929 - (Alternative 3)**
- (C)  1940 - (Alternative 1)
- (D)  1945 - (Alternative 4)

**Question No.16**

1.00

Bookmark 

Against which team did Sachin Tendulkar make his 100th international century?

- (A)  Pakistan - (Alternative 1)
- (B)  Australia - (Alternative 3)
- (C)  **Bangladesh - (Alternative 4)**
- (D)  South Africa - (Alternative 2)

**Question no.17**

1.00

In which of the following countries is the St George Park Stadium located?

- (A)  Zimbabwe - (Alternative 3)  
(B)  **South Africa - (Alternative 1)**  
(C)  United States - (Alternative 2)  
(D)  West Indies - (Alternative 4)

**Question No.18**

1.00

Bookmark 

What is the formula for Plaster of Paris?

- (A)   $G_2 \text{ sleeping }_2 \text{ KI} / 2H_2 O$  - (Alternative 4)  
(B)   $G_2 \text{ sleep }_4 \text{ KI} / 2H_2 O$  - (Alternative 1)  
(C)   **$CaSO_4 \text{ KI} / 2H_2 O$  - (Alternative 3)**  
(D)   $CaSO_4$  - (Alternative 2)

**Question No.19**

1.00

Bookmark 

When was the Singh Sabha movement formed in Amritsar?

- (A)  1997 - (Alternative 4)  
(B)  1830 - (Optional 3)  
(C)  **1873 - (Alternative 2)**  
(D)  1920 - (Alternative 1)

**Question No.20**

1.00

Bookmark 

On high temperatures, gas-melt rock content located below the surface of the Earth is called

- (A)  Hot Spring (Hot Waterfall) - (Alternative 2)  
(B)  Lava - (Alternative 4)  
(C)  Mica (Asbestos) - (Alternative 1)  
(D)  **Magma - (Alternative 3)**

**Question no.21**

1.00

Bookmark 

Which list of constitution gives the list of states and union territories?

- (A)  Tenth Schedule - (Alternative 3)  
(B)  Second Schedule - (Alternative 1)  
(C)  Seventh Schedule - (Alternative 2)  
(D)  **First Schedule - (Alternative 4)**

**Question no.22**

1.00

Bookmark 

Who was the leader of the Munda Rebellion between 1875-1900?

- (A)  **Birsa Munda - (Alternative 4)**  
(B)  Raghava Munda - (Alternative 1)

- (C)  Balavid Munda - (Alternative 3)  
(D)  Rajesh Munda - (Alternative 2)

**Question no.23**

1.00

Bookmark 

Who is the author of the drama 'Shakuntala'?

- (A)  Amar Singh - (Alternative 4)  
(B)  Cone - (Alternative 1)  
(C)  Varachichi - (Alternative 3)  
(D)  **Kalidas - (Alternative 2)**

**Question no.24**

1.00

Bookmark 

Asia Cup belongs to which of the following sports?

- (A)  Underwater Hockey - (Alternative 4)  
(B)  **Cricket - (Alternative 3)**  
(C)  Rugby - (Alternative 1)  
(D)  Baseball - (Alternative 2)

**Question No.25**

1.00

Bookmark 

Which of these is not a classical dance?

- (A)  Manipuri - (Alternative 2)  
(B)  Odyssey - (Alternative 3)  
(C)  **Rasali - (Alternative 1)**  
(D)  Kuchipri - (Alternative 4)

**Question no.26**

1.00

Bookmark 

How much is the tenure of Chief Election Commissioner's office

- (A)  **Six years - (Alternative 4)**  
(B)  Three years - (Optional 3)  
(C)  Five years - (Optional 2)  
(D)  Four years - (Alternative 1)

**Question no.27**

1.00

Bookmark 

Where is the Sahara desert located in the following countries / continents?

- (A)  South America - (Alternative 1)  
(B)  North America - (Alternative 2)  
(C)  China - (Alternative 3)  
(D)  **North Africa - (Alternative 4)**

**Question no.28**

1.00

Bookmark 

Which one of the following devotional saints have projected the philosophy of Confirmation?

- (A)  **Vallabhacharya - (Alternative 3)**
- (B)  Sadhna - (Alternative 4)
- (C)  Madhavacharya - (Alternative 2)
- (D)  Ramanand - (Alternative 1)

**Question no.29**

1.00

**Bookmark** 

What is the mass of the moon?

- (A)   **$7.347 \times 10^{22}$  kg - (Optional 2)**
- (B)   $7.347 \times 10^{26}$  kg - (Optional 3)
- (C)   $6.347 \times 10^{24}$  kg - (Optional 4)
- (D)   $6.347 \times 10^{22}$  kg - (Optional 1)

**Question No.30**

1.00

**Bookmark** 

Which of the following languages has been declared as the official language of the Government of India?

- (A)  Bengali - (Alternative 4)
- (B)  Telugu - (Alternative 3)
- (C)  Tamil - (Alternative 2)
- (D)  **Hindi - (Alternative 1)**

**Question No.31**

1.00

**Bookmark** 

Prime Minister is the leader of the \_\_\_\_\_

- (A)  Majority party in Rajya Sabha - (Alternative 3)
- (B)  None of these - (Alternative 4)
- (C)  Majority party in parliament - (Alternative 1)
- (D)  **Majority party in Lok Sabha - (Alternative 2)**

**Question No.32**

1.00

**Bookmark** 

Mughal miniature painting reached its peak during the rule of \_\_\_\_\_

- (A)  **Jahangir - (Alternative 3)**
- (B)  Aurangzeb - (Alternative 1)
- (C)  Shah Jahan - (Alternative 4)
- (D)  Akbar - (Alternative 2)

**Question No.33**

1.00

**Bookmark** 

Was the first president of the Rajya Sabha

- (A)  Neelam Sanjiva Reddy - (Alternative 4)
- (B)  V.V. (Alternative 3)
- (C)  Dr. Zakir Hussain - (Alternative 1)

(D)  **Dr. S. Radhakrishnan - (Alternative 2)**

**Question No.34**

1.00

Bookmark

India has the office of President's office

- (A)  Six years - (Optional 3)
- (B)  Not defined duration - (Optional 1)
- (C)  **Five years - (Optional 4)**
- (D)  Four years - (Alternative 2)

**Question No.35**

1.00

Bookmark

According to the 2011 census, which of the following states of India is the lowest sex ratio?

- (A)  Sikkim - (Alternative 3)
- (B)  Bihar - (Alternative 4)
- (C)  **Haryana - (Alternative 2)**
- (D)  Kerala - (Alternative 1)

**Question No.36**

1.00

Bookmark

Which of the following is the least densely populated place in the world?

- (A)  Jarvis Island - (Alternative 4)
- (B)  **Greenland - (Alternative 2)**
- (C)  Bermuda - (Alternative 3)
- (D)  Hogggo - (Alternative 1)

**Question No.37**

1.00

Bookmark

The crops sown during the winter season are called \_\_\_\_\_ crops.

- (A)  Kharif - (Alternative 2)
- (B)  **Rabi - (Alternative 1)**
- (C)  Faber / Spade - (Alternative 4)
- (D)  Weird - (Optional 3)

**Question No.38**

1.00

Bookmark

Ukai Dam is located in \_\_\_\_\_

- (A)  Manipuri - (Alternative 3)
- (B)  Punjab - (Alternative 1)
- (C)  Tripura - (Alternative 4)
- (D)  **Gujarat - (Alternative 2)**

**Question No.39**

1.00

Bookmark

Hornbill festival is celebrated in which of the following states?

- (A)  **Nagaland - (Alternative 2)**



- (B)  Kerala - (Alternative 1)
- (C)  Karnataka - (Alternative 3)
- (D)  Mizoram - (Alternative 4)

**Question No.40**

1.00

**Bookmark** 

What is the expansion of "ESIC"?

- (A)  Employees' State India Corporation - (Alternative 4)
- (B)  **Employees' State Insurance Corporation - (Optional 2)**
- (C)  Employees' State Information Corporation - (Optional 1)
- (D)  Employees' State Insurance Council - (Alternative 3)

**Question No.41**

1.00

**Bookmark** 

The Speaker of Lok Sabha is elected by \_\_\_\_\_

- (A)  **All Members of the Lok Sabha - (Optional 3)**
- (B)  People directly - (Alternative 2)
- (C)  All Members of Parliament - (Alternative 1)
- (D)  Chief Justice of India - (Alternative 4)

**Question No.42**

1.00

**Bookmark** 

Sunderban National Park is located in \_\_\_\_\_

- (A)  Madhya Pradesh - (Alternative 3)
- (B)  Bihar - (Alternative 2)
- (C)  **West Bengal - (Alternative 4)**
- (D)  Uttar Pradesh - (Alternative 1)

**Question No.43**

1.00

**Bookmark** 

Which of the following is India's 29th state?

- (A)  Goa - (Alternative 2)
- (B)  **Telangana - (Alternative 3)**
- (C)  Mizoram - (Alternative 1)
- (D)  Jharkhand - (Alternative 4)

**Question no.44**

1.00

**Bookmark** 

What is the formula for "frequency" (Frequency)?

- (A)  **1 / Covered Period - (Optional 4)**
- (B)  Recurring Period 2 - (Optional 1)
- (C)  Recurring Period - (Optional 3)
- (D)  Recurring Time / 4 - (Optional 2)

**Question No.45**

1.00

**Bookmark**

Which of the following is the natural source of lactic acid?

- (A)  Tomato - (Alternative 2)
- (B)  Potatoes - (Alternative 3)
- (C)  Ant Sting - (Alternative 4)
- (D)  Milk - (Alternative 1)

**Question No.46**

1.00

Bookmark

What is the capital of Canada?

- (A)  Beijing - (Alternative 4)
- (B)  Georgetown - (Alternative 1)
- (C)  Santiago - (Alternative 3)
- (D)  Ottawa - (Alternative 2)

**Question no.47**

1.00

Bookmark

Which is the capital of Punjab?

- (A)  Chandigarh - (Alternative 3)
- (B)  Ludhiana - (Alternative 1)
- (C)  CoverStory - (Alternative 2)
- (D)  Itanagar - (Alternative 4)

**Question no.48**

1.00

Bookmark

What is the nickname of hockey player Major Dhyhan Chand?

- (A)  Jamie - (Alternative 4)
- (B)  Wall (The Wall) - (Alternative 3)
- (C)  Flyer (Flying Man) - (Alternative 1)
- (D)  Magician (Wizard) - (Alternative 2)

**Question No.49**

1.00

Bookmark

The number of nominated members in the Lok Sabha by the President

- (A)  2 - (Optional 3)
- (B)  4 - (Optional 4)
- (C)  12 - (Optional 1)
- (D)  1 - (Optional 2)

**Question No.50**

1.00

Bookmark

What is the atomic number of helium?

- (A)  3 - (Optional 4)
- (B)  1 - (Optional 2)
- (C)  4 - (Optional 1)
- (D)  2 - (Optional 3)

## Question No.51

Bookmark 

In this question, after two statements i and II two conclusions have been given. Assuming the given given in the statement together as truth, consider both the findings together and decide on which one of them follows beyond the logical and appropriate skepticism based on the information given in the statement.

Statement: Some papers are pen. All pencils are pen.

Conclusion:

- i) Some pencils are papers
- ii) Some pen pencils are one of the

following options to choose appropriate

- (A) only conclusions follow i
- (B) only follows conclusion II
- (C) either follow I or II the
- (D) neither I nor II follows
- the (E) I and II both follow

- (A)  D - (Alternative 4)
- (B)  A - (Alternative 1)
- (C)  **B - (Alternative 2)**
- (D)  C - (Alternative 3)

## Question No.52

1.00

Bookmark 

Read the following statement and answer the following question.

A @ B means AB is the mother of

A # B, which means AB is father.

A \$ B means AB's brother is

A% B means AB is sister

. Which of the following shows that 'P " R 'is aunt'?

- (A)  **P% Q # R - (Optional 4)**
- (B)  P% Q @ R - (Optional 2)
- (C)  Q% P # R - (Optional 3)
- (D)  P @ Q @ R - (Optional 1)

## Question No.53

1.00

Bookmark 

According to the logic used in the first pair, replace the question mark with the appropriate option given to

Cytology: Cells :: Entomology: ??

- (A)  Viruses - (Alternative 1)
- (B)  **Insects - (Alternative 2)**
- (C)  Soil - (Alternative 3)
- (D)  Tissues - (Alternative 4)

## Question No.54

1.00

Bookmark 

In any code language, if MORTAL is coded as VSQPEX, what will be the code of GARDEN in that language?

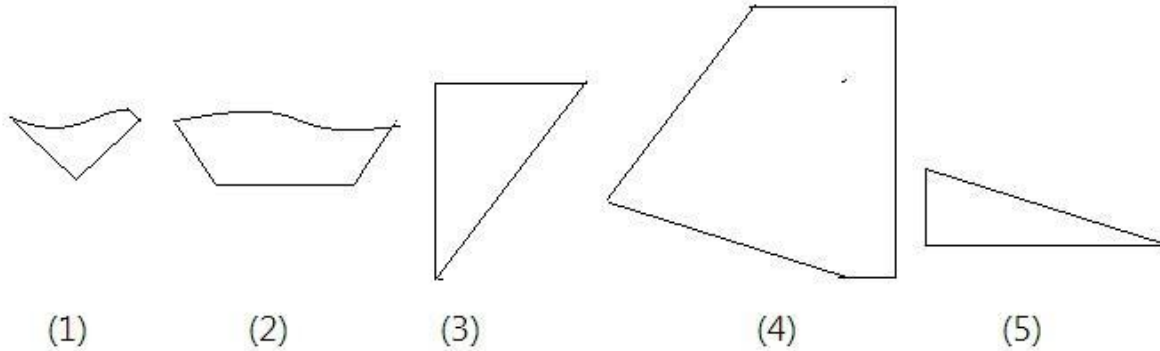
- (A)  VEKIRH - (Alternative 3)
- (B)  **VEKRIH - (Optional 2)**
- (C)  KEVIHR - (Optional 1)
- (D)  KVEHRI - (Optional 4)

**Question no.55**

1.00

Bookmark

Select the correct option from the following options which could create a full square (3 out of 5 images below):



- (A)  1,3,5 - (Alternative 2)
- (B)  2,4,5 - (Optional 4)
- (C)  **3,4,5 - (Optional 1)**
- (D)  2,3,4 - (Optional 3)

**Question no.56**

1.00

Bookmark

In this question, the relationship between different elements has been shown in the statement. After the statement, two conclusions have been given:

Statement:  $C \leq O > N \geq L = U < S \leq I < K$

Conclusions:

i)  $C \leq U$

ii)

Choose a suitable one of the following options

- (A) only conclusion i follows
- (ii) only the conclusion ii
- (C) either i or ii follows
- (d) neither i nor ii follows
- (i) i and ii both follow

- (A)  A - (Alternative 1)
- (B)  **C - (Alternative 3)**
- (C)  B - (Alternative 2)
- (D)  D - (Alternative 4)

**Question no.57**

1.00

Bookmark

Four of the following five are somehow similar and therefore create a group. Which of these is not related to this group?

BFJ, MQU, KPU, JNR, LPT

- (A)  MQU - (Optional 1)

- (B)  **KPU - (Optional 3)**  
 (C)  LPT - (Alternative 4)  
 (D)  BFJ - (Alternative 2)

**Question no.58**

1.00

Bookmark

In accordance with the logic used in the first pair, replace the question mark with the appropriate option given to  
 4441: 13 :: 3136: ??

- (A)  14 - (Optional 1)  
 (B)  21 - (Optional 2)  
 (C)  15 - (Optional 3)  
 (D)  **13 - (Optional 4)**

**Question No.59**

1.00

Bookmark

Find the upcoming numbers in this series.  
 19, 28, 46, 82, 154,?

- (A)  **298 - (Optional 4)**  
 (B)  308 - (Optional 1)  
 (C)  328 - (Optional 3)  
 (D)  318 - (Alternative 2)

**Question No.60**

1.00

Bookmark

Four of the following five are somehow similar and therefore create a group. Which of these is not related to this group?

Wander, Saunter, Roam, Stride, Stammer

- (A)  Stride - (Optional 4)  
 (B)  Wander - (Alternative 3)  
 (C)  Saunter - (Alternative 2)  
 (D)  **Stammer - (Optional 1)**

**Question No.61**

1.00

Bookmark

Carefully read the given information and answer the questions as per the following.

6 students Anil, Sita, Mansi, Kajal, Govind and Varu sit around looking around the center of a circular table (not necessarily in the same order). All six students prefer different subjects such as mathematics, physics, history, geography, chemistry and biology.

- i) The mathematics that likes it sits between the mascara and the mansi.
- ii) The person who likes Chemistry is at the third position on the right side of Kajal.
- iii) Varu, who is not a neighbor of Govind, likes biology.
- iv) Kajal sits immediately on the left side of Varu.
- v) Govind does not like mathematics.
- vi) Sita is at the third position on the right side of the person who likes history.
- vii) Who likes physics and who like biology are neighbors

Which of the following statements is correct in relation to the system?

- (A)  Anil sits in the second position on the right side of Govind - (Alternative 3)
- (B)  Mascara likes Chemistry - (Alternative 2)
- (C)  Sita and Anil are neighbors - (Alternative 4)
- (D)  **Who likes chemistry sits between Anil and Mansi - (Alternative 1)**

**Question No.62**

1.00

Bookmark

In this question, after three statements four conclusions have been given. Considering the given given in the statement together, consider the findings together and decide on which one of them follows beyond the logical and appropriate skepticism based on the information given in the statement.

Statement: All boys are children All the kids are beautiful. Some girls are girls

Conclusion:

- i) All children are boys
- ii) Some girls are beautiful
- iii) Some boys are girls
- iv) all boys are beautiful

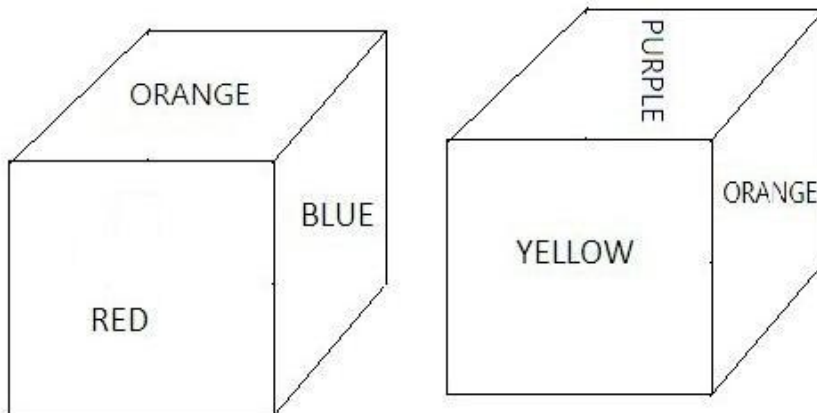
- (A)  **Only ii) and iv) - (optional 3)**
- (B)  I only, ii) and iii) - (alternative 2)
- (C)  Only i) - (Optional 1)
- (D)  All Follow - (Optional 4)

**Question No.63**

1.00

Bookmark

According to the given figure, each side of the dice is painted with purple, red red, yellow, blue, gray and orange. What color is painted in contrast to the red color?



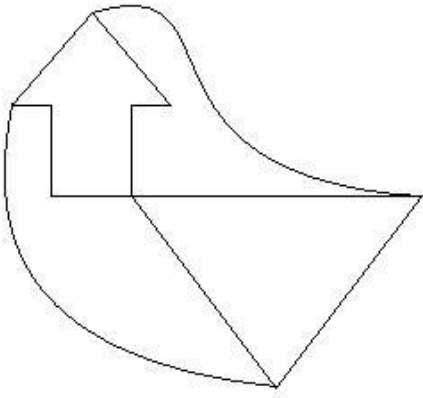
- (A)  Sentinel - (Alternative 4)
- (B)  **Purple - (Optional 3)**
- (C)  Yellow - (Alternative 1)
- (D)  Blue - (Alternative 2)

**Question No.64**

1.00

Bookmark

How many simple lines are there in the given image?



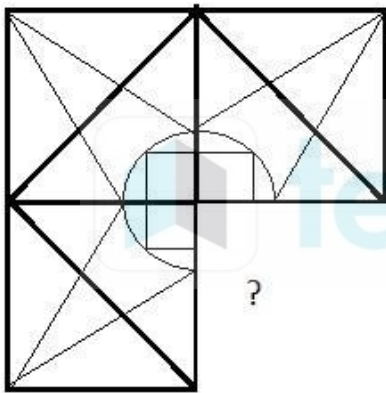
- (A)  11 - (Optional 4)
- (B)  12 - (Optional 1)
- (C)  9 - (Optional 3)
- (D)  8 - (Optional 2)

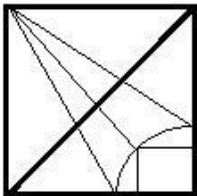
**Question No.65**

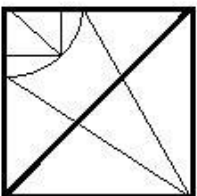
1.00

Bookmark

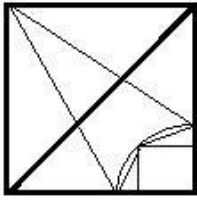
Choose the correct option that can meet the image pattern of the given image.



- (A)   - (Optional 4)

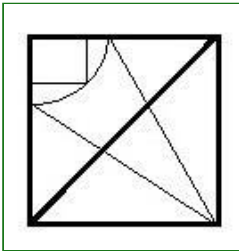
- (B)   - (Optional 2)

- (C)



- (Optional 1)

(D)



- (Optional 3)

**Question No.66**

1.00

Bookmark

'L' is the son of 'K' whose only daughter is G. 'L' is the son of 'B', whose wife is A How is A related to G?

- (A)  Bahu - (Alternative 4)
- (B)  Daughter - (Alternative 1)
- (C)  Niece - (Alternative 3)
- (D)  **Mother-in-law - (Alternative 2)**

**Question No.67**

1.00

Bookmark

Four of the following five are somehow similar and therefore create a group. Which of these is not related to this group?

L, F, X, R, B

- (A)  X - (Optional 1)
- (B)  L - (Alternative 4)
- (C)  F - (Alternative 2)
- (D)  **B - (Optional 3)**

**Question No.68**

1.00

Bookmark

According to the logic used in the first pair, replace the question mark with the appropriate option

MJ: HE :: GW: ??

- (A)  FS - (Optional 3)
- (B)  CR - (Optional 2)
- (C)  ES - (Alternative 4)
- (D)  **BR - (Alternative 1)**

**Question No.69**

1.00

Bookmark

A quote is given in this question, after which a statement has been given. Read the quotation carefully and determine the statement based on the quotation given.

A Chinese researcher, Hei-Jianqui, from Southern University of Southern Science and Technology



in Shenzhen, spread his sensation in an international world that he has made changes in the human fetal genes, and as a result, early twins in the beginning of this month were born. If this proved to be true, then this genes would be the first example of human offspring, with the specific desirable characteristics arising from the use of newly developed tools of "editing". According to the claim, in the case of newly born Chinese infants, genes have been edited in such a way that it is not affected by the HIV virus, which causes AIDS.

The stir caused by the announcement is not only due to scientific leap, but the excitement is about serious ethical questions. Gene "Editing" capabilities are now present with hundreds of researchers and labs around the world. But in the case of China, the leading scientists of this area, including co-inventor Jennifer Doudna, of CRISPR technology used to "edit" the genes have long "global breakdown" on 'diagnostic applications of technology in humans'. As long as the internationally accepted protocols are not developed,

Statement: CRISPR is a technique that can be used for editing gene.

Choose one of the following options

- A statement is definitely true.
- B - The statement is probably true.
- C - Statement can not be determined.
- D - The statement is definitely false.

- (A)  C - (Alternative 3)
- (B)  D - (Alternative 4)
- (C)  A - (Alternative 1)
- (D)  B - (Alternative 2)

**Question No.70**

1.00

Bookmark

Identify the image of the image given with the following options:

**SKETCH**

- (A)  **SKETCH** - (Optional 1)
- (B)  **SKETCH** - (Optional 3)
- (C)  **SKETCH** - (Optional 4)
- (D)  **SKETCH** - (Optional 2)

**Question No.71**

1.00

Bookmark

Pointing to a boy, one man said, "He is the only son of the husband of the mother of my son's sister." How is the man related to the boy?

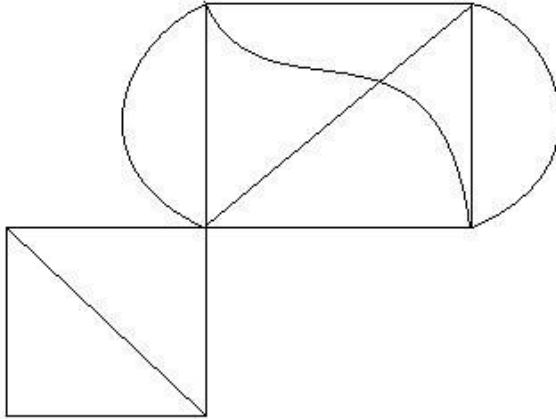
- (A)  Father - (Optional 1)
- (B)  Dada - (Alternative 2)
- (C)  Cage - (Alternative 4)
- (D)  **Uncle - (Alternative 3)**

**Question No.72**

1.00

Bookmark

How many right angled triangles can be made from the given image?



- (A)  6 - (Optional 3)
- (B)  **4 - (Optional 2)**
- (C)  3 - (Optional 4)
- (D)  2 - (Optional 1)

**Question No.73**

1.00

Bookmark

According to the logic used in the first pair, replace the question mark with the appropriate option.

Author: Pen :: Barber: ??

- (A)  Trowel - (Alternative 4)
- (B)  Spade - (Optional 3)
- (C)  Tack - (Alternative 1)
- (D)  **Scissor - (Alternative 2)**

**Question No.74**

1.00

Bookmark

In any code language, if AMBLE has been coded as ZNYOV, what will be the code of PATROL in that language?

- (A)  KGZLIO - (Optional 3)
- (B)  **KZGILO - (Optional 1)**
- (C)  QZUSLM - (Optional 4)
- (D)  QUZLSM - (Optional 2)

**Question No.75**

1.00

Bookmark

A quote is given in this question, after which a statement has been given. Read the quotation carefully and determine the statement based on the quotation given.

A Chinese researcher, Hei-Jianqui, from Southern University of Southern Science and Technology

in Shenzhen, spread his sensation in an international world that he has made changes in the human fetal genes, and as a result, early twins in the beginning of this month were born. If this proved to be true, then this gene would be the first example of human offspring, with the specific desirable characteristics arising from the use of newly developed tools of "editing". According to the claim, in the case of newly born Chinese infants, genes have been edited in such a way that it is not affected by the HIV virus, which causes AIDS.

The stir caused by the announcement is not only due to scientific leap, but the excitement is about serious ethical questions. Gene "Editing" capabilities are now present with hundreds of researchers and labs around the world. But in the case of China, the leading scientists of this area, including co-inventor Jennifer Doudna, of CRISPR technology used to "edit" the genes have long "global breakdown" on 'diagnostic applications of technology in humans'. As long as the internationally accepted protocols are not developed,

Statement: Researcher Jiankui's claim that he has changed the human fetal genes has proved to be true.

Choose one of the following options

- A statement is definitely true.
- B - The statement is probably true.
- C - Statement can not be determined.
- D - The statement is definitely false.

- (A)  C - (Alternative 3)
- (B)  D - (Alternative 4)
- (C)  A - (Alternative 1)
- (D)  B - (Alternative 2)

#### Question No.76

1.00

Bookmark

Carefully read the given information and answer the questions as per the following. 6 students Anil, Sita, Mansi, Kajal, Govind and Varu sit around looking around the center of a circular table (not necessarily in the same order). All six students prefer different subjects such as mathematics, physics, history, geography, chemistry and biology.

- i) The mathematics that likes it sits between the Mansi and the Mansi.
- ii) The person who likes Chemistry is at the third position on the right side of Kajal.
- iii) Varu, who is not a neighbor of Govind, likes biology.
- iv) Kajal sits immediately on the left side of Varu.
- v) Govind does not like mathematics.
- vi) Sita is at the third position on the right side of the person who likes history.
- vii) Who likes physics and who like biology are neighbors

Who sits right between Varu and Sita?

- (A)  Mansi - (Alternative 4)
- (B)  Those who like physics - (Alternative 3)
- (C)  Govind - (Alternative 1)
- (D)  Those who like history - (Alternative 2)

#### Question No.77

1.00

Bookmark

Find the upcoming numbers in this series.

12, 43, 162, 633, ?

- (A)  1899 - (Optional 1)
- (B)  1879 - (Alternative 4)
- (C)  2512 - (Optional 2)

(D)  2532 - (Optional 3)

**Question No.78**

1.00

Bookmark

Find the upcoming numbers in this series.

3, 13, 35, 109, 323,?

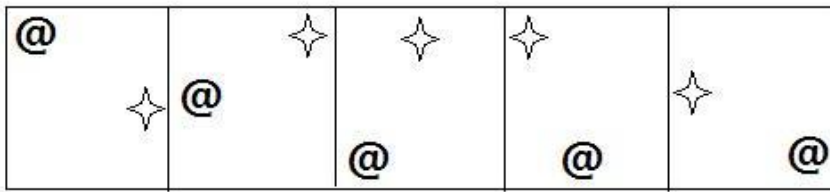
- (A)  973 - (Alternative 2)
- (B)  969 - (Optional 4)
- (C)  946 - (Optional 3)
- (D)  646 - (Optional 1)

**Question No.79**

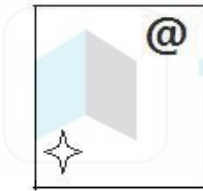
1.00

Bookmark

Which of the options given for the given series will be the next picture?

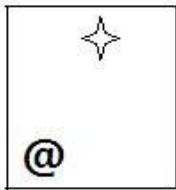


(A)



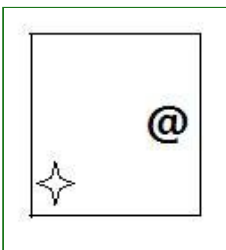
- (Optional 1)

(B)



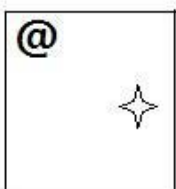
- (Optional 4)

(C)



- (Optional 2)

(D)

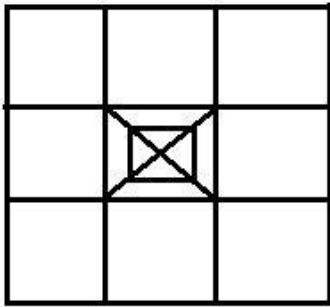


- (Optional 3)

Question No. 80

Bookmark

How many classes are there in the given image?



- (A)  16 - (Optional 2)
- (B)  18 - (Optional 3)
- (C)  15 - (Optional 1)
- (D)  12 - (Optional 4)

Question No.81

1.00

Bookmark

Find the upcoming numbers in this series.  
169, 146, 157, 134, 145,?

- (A)  156 - (Alternative 4)
- (B)  168 - (Optional 3)
- (C)  136 - (Alternative 2)
- (D)  122 - (Optional 1)

Question No.82

1.00

Bookmark

If a mirror is placed on the shaded line, which of the following options is the correct image of the given shape?



- (A)  **AYBIL** - (Optional 3)
- (B)  **AYBIL** - (Optional 2)
- (C)  **JIBYA** - (Optional 1)
- (D)

## Question no.83

1.00

Bookmark 

In this question, there are two statements showing relations, after which I, ii and iii have been given three conclusions. Assuming that the given statements are true, find out which conclusions are true / true.

Statement:  $J = I > N \geq G; G > L = E < M; T < U < J$

Conclusion:

- i)  $T < i$
- ii)  $I > E$
- iii)  $J > L$

- (A)  Only i) and iii) - (Optional 1)
- (B)  **All Follow - (Optional 4)**
- (C)  Only i) and ii) - (Optional 2)
- (D)  Only iii) - (Optional 3)

## Question no.84

1.00

Bookmark 

In this question, after a statement i and ii two conclusions have been given. Assuming the given given in the statement together as truth, consider both the findings together and decide on which one of them follows beyond the logical and appropriate skepticism based on the information given in the statement.

Statement: weight is proportional to height

Conclusion:

- i) If weight grows, height decreases.
  - ii) If height increases, then weight decreases.
- Choose the appropriate one of the following options

- (A) only follows the conclusions i
- (B) Only conclusions follow ii
- (C) either i or ii follows
- (D) neither i nor ii follows
- (E) both i and ii follow

- (A)  A - (Alternative 1)
- (B)  B - (Alternative 2)
- (C)  D - (Alternative 4)
- (D)  **C - (Alternative 3)**

## Question no.85

1.00

Bookmark 

Carefully read the given information and answer the questions as per the following.

6 students Anil, Sita, Mansi, Kajal, Govind and Varu sit around looking around the center of a circular table (not necessarily in the same order). All six students prefer different subjects such as mathematics, physics, history, geography, chemistry and biology.

- i) The mathematics that likes it sits between the mascara and the mansi.
- ii) The person who likes Chemistry is at the third position on the right side of Kajal.
- iii) Varu, who is not a neighbor of Govind, likes biology.
- iv) Kajal sits immediately on the left side of Varu.

- v) Govind does not like mathematics.  
vi) Sita is at the third position on the right side of the person who likes history.  
vii) Who likes physics and who like biology are neighbors

Who likes history?

- (A)  **Anil - (Alternative 2)**  
(B)  Sita - (Alternative 3)  
(C)  Mansi - (Alternative 4)  
(D)  Govind - (Alternative 1)

**Question no.86**

1.00

Bookmark

Jeffrey donates 13% of his salary to disabled organizations, 12% orphanages, 14% of physically handicapped organizations and 16% of medical aid organizations. The remaining amount deposits the amount of 23445 for the monthly expenditure in the bank. Tell the amount donated in the orphanage.

- (A)  6652 - (Optional 3)  
(B)  **6252 - (Optional 2)**  
(C)  6452 - (Optional 1)  
(D)  6852 - (Optional 4)

**Question No.87**

1.00

Bookmark

If the radius of a circle becomes ten times, how much of its periphery will be its circumference?

- (A)  9 - (Optional 3)  
(B)  8 - (Optional 1)  
(C)  11 - (Optional 4)  
(D)  **10 - (Optional 2)**

**Question no.88**

1.00

Bookmark

The tellyn moves at a speed of normal speed ( $\frac{10}{11}$ ) and takes 13 minutes more than normal time. Find the usual time taken.

- (A)  **130 mins - (Alternative 2)**  
(B)  120 mins - (Optional 1)  
(C)  140 mins - (Alternative 3)  
(D)  150 mins - (Alternative 4)

**Question No.89**

1.00

Bookmark

In a box, there are three different types of old coins in ratio 6 : 7 : 8; the value of the old coin is Rs. 1, Rs. 5 and Rs. 10 respectively. If the total value of the coin is 847 rupees in the box, then find the number of coins worth 10 rupees.

- (A)  84 - (Alternative 2)  
(B)  65 - (Alternative 4)  
(C)  **56 - (Optional 3)**  
(D)

(D) 48 - (Optional 1)

**Question No.90**

1.00

Bookmark

A train takes 73 seconds to cross the bridge of 448 meters. If this train takes 41 seconds to cross the sign board then find out the length of the train.

- (A)  484 m - (Optional 1)
- (B)  **574 m - (Optional 3)**
- (C)  563 m - (Alternative 2)
- (D)  624m - (Optional 4)

**Question No.91**

1.00

Bookmark

There is 10 rings in a gift box. The average weight of the first 4 rings is 39 grams and the remaining 6 rings have an average weight of 40 grams. Get the average weight of the total rings. (In the village)

- (A)  39.4 - (Optional 2)
- (B)  39.2 - (Optional 1)
- (C)  **39.6 - (Optional 3)**
- (D)  39.8 - (Optional 4)

**Question No.92**

1.00

Bookmark

The time taken by Rakesh and Wiki to cover the distance of 1000 km is in the ratio of 35: 27. Find the ratio of their motions.

- (A)  35:27 - (Optional 1)
- (B)  39:27 - (Optional 3)
- (C)  **27:35 - (Optional 2)**
- (D)  27:39 - (Optional 4)

**Question No.93**

1.00

Bookmark

Solve:

$$486 \div \left\{ \frac{3}{4} \left[ \frac{16}{15} \right] - \frac{2}{3} \right\} = ?$$

- (A)  3654 - (Alternative 4)
- (B)  **3645 - (Optional 1)**
- (C)  3456 - (Optional 3)
- (D)  3465 - (Alternative 2)



## Question No.94

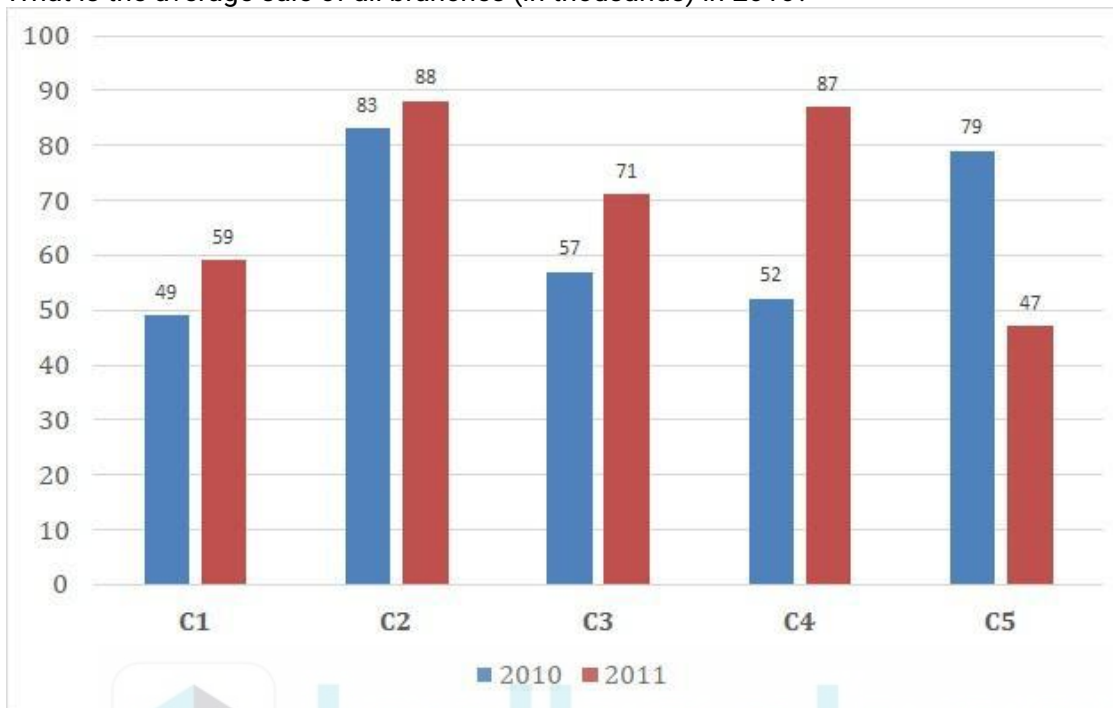
Bookmark 

Instructions:

Study the graph of the following times and answer the following question:

Books (from thousands of C1, C2, C3, C4 and C5) of a publishing company in two consecutive years of 2010 and 2011 ) Sales.

What is the average sale of all branches (in thousands) in 2010?



- (A)  66 - (Alternative 4)
- (B)  65 - (Optional 3)
- (C)  64 - (Alternative 2)
- (D)  63 - (Optional 1)

## Question No.95

1.00

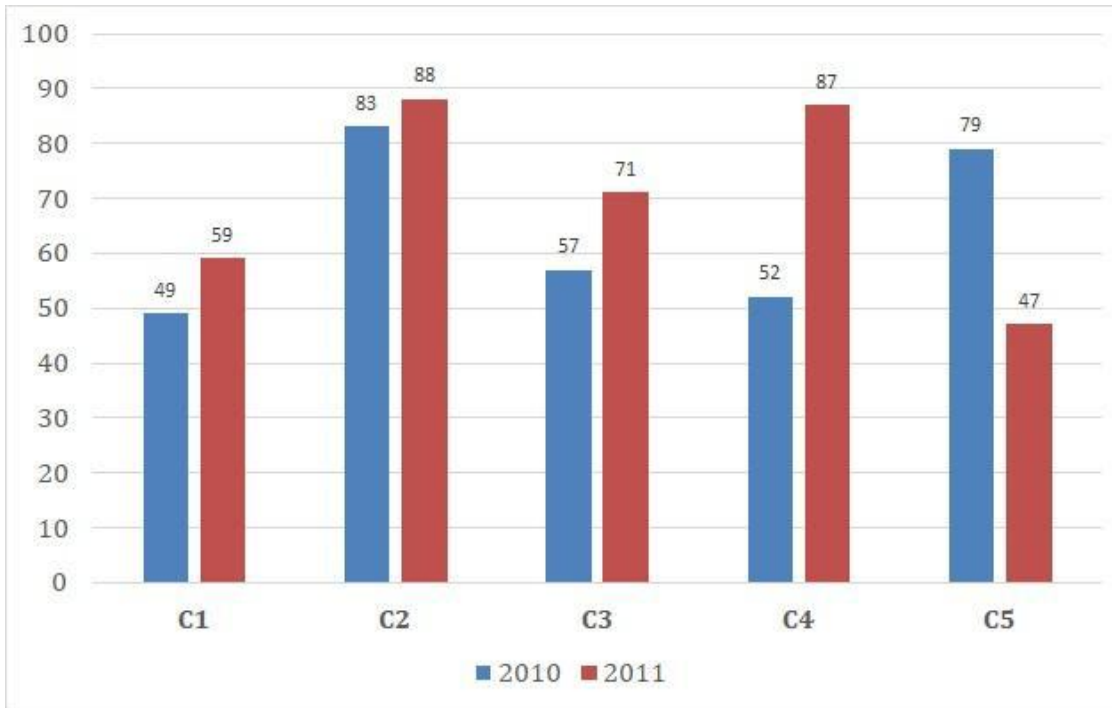
Bookmark 

Instructions:

Study the graph of the following times and answer the following question:

Books (from thousands of C1, C2, C3, C4 and C5) of a publishing company in two consecutive years of 2010 and 2011 ) Sales.

How much is the total sales in C1, C3 and C5 branches during the two years? (In thousands)



- (A)  364 - (Alternative 2)
- (B)  361 - (Optional 1)
- (C)  363 - (Alternative 4)
- (D)  362 - (Optional 3)

**Question No.96**

1.00

 Bookmark 

A person reaches the college with a speed of 45 km / hr from the hostel till 5 minutes late. If he runs a bike at 60 kmph and he reaches 4 minutes early. Find the distance between the hostel and the college.

- (A)  23 km - (Optional 1)
- (B)  27km - (Optional 4)
- (C)  25 km - (Optional 3)
- (D)  35 km - (Alternative 2)

**Question No.97**

1.00

 Bookmark 

The profit earned on the item sold at the rate of 2720 rupees, is 11% more profit than the loss on the same item sold at the rate of Rs. 1,243. Find the purchase price of the item.

- (A)  Rs.11934 - (Alternative 2)
- (B)  Rs.1943 - (Optional 1)
- (C)  Rs 1843 - (Optional 4)
- (D)  Rs 1834 - (Optional 3)

**Question No.98**

1.00

 Bookmark 

A shopkeeper sells a product at a price of Rs 1,368 and earns 12.5% profit. What will be the amount equal to half of the purchase price of the product.

- (A)  Rs.608 - (Optional 3)

- (B)  Rs.604 - (Optional 1)  
 (C)  Rs.610 - (Optional 4)  
 (D)  Rs.606 - (Optional 2)

**Question No.99**

1.00

Bookmark

How can the students in the classroom be distributed equally to 720 mobiles?

- (A)  16 - (Optional 2)  
 (B)  30 - (Optional 1)  
 (C)  20 - (Optional 3)  
 (D)  24 - (Optional 4)

**Question No.100**

1.00

Bookmark

The average weight of 103 notebooks in a box is 10.3 kg. When a new notebook is added to the box, the average weight goes up to 10.4 kg. Tell the weight of the new notebook.

- (A)  20.7 kg - (Optional 1)  
 (B)  20.3 kg - (Optional 4)  
 (C)  20.5 kg - (Optional 3)  
 (D)  20.9 kg - (Optional 2)

**Question No.101**

1.00

Bookmark

The station master decides to increase the length and breadth of a rectangular digital board by 7% and 7% respectively. Show changes in total area

- (A)  0.49% less - (Alternative 3)  
 (B)  Increases 0.36% - (Optional 1)  
 (C)  Increases 0.49% - (Alternative 4)  
 (D)  0.36% decreases - (Alternative 2)

**Question No.102**

1.00

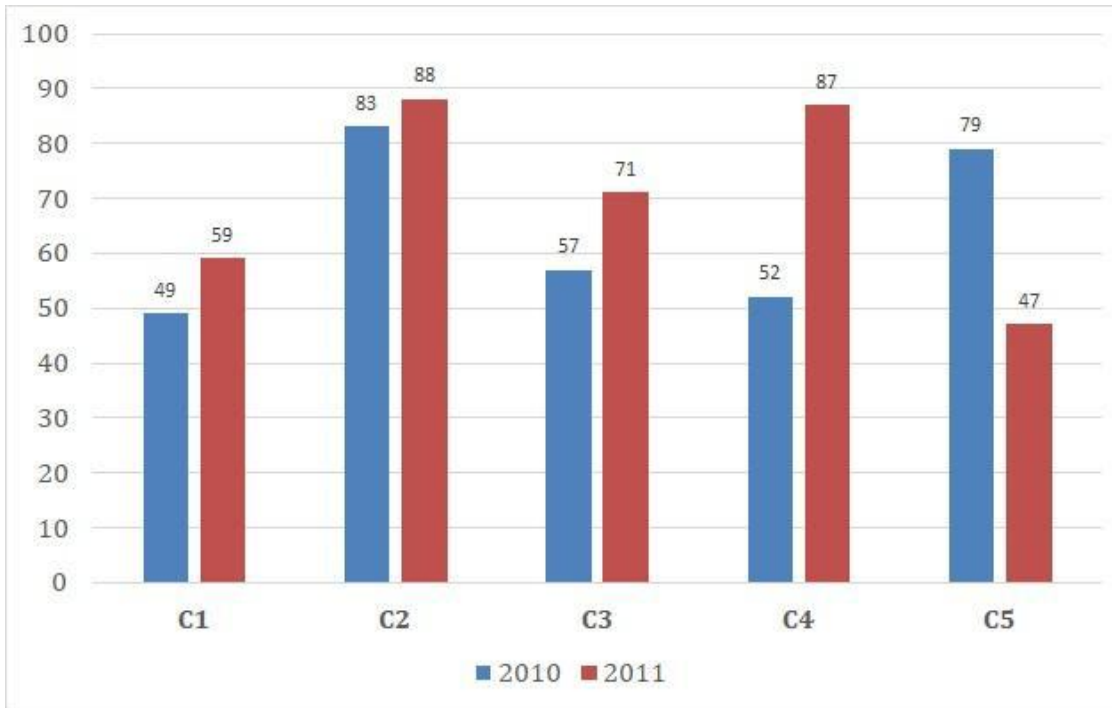
Bookmark

Instructions:

Study the graph of the following times and answer the following question:

Books (from thousands of C1, C2, C3, C4 and C5) of a publishing company in two consecutive years of 2010 and 2011 ) Sales.

What is the ratio of the total sales of branch C2 during the two years and the total sales of branch C 4 during the two years?



- (A)  171: 139 - (Optional 4)
- (B)  183: 169 - (Optional 1)
- (C)  139: 171 - (Optional 3)
- (D)  169: 183 - (Optional 2)

Question No.103

1.00

Bookmark

Solve:

$$\frac{1}{13} \div \frac{1}{13} \div \frac{1}{13} \div \frac{1}{13} \div \frac{1}{13} = ?$$

- (A)  2197 - (Alternative 2)
- (B)  1444 - (Optional 1)
- (C)  1331 - (Optional 3)
- (D)  2917 - (Optional 4)

Question No.104

1.00

Bookmark

The amount of 5600 rupees was invested on simple interest at the rate of 8% per annum. If after 5 years the amount is withdrawn and half the amount of the total amount is invested in the market. Find out the balance. (In rupees)

- (A)  3820 - (Optional 3)
- (B)  3920 - (Optional 4)
-

- (C) 3720 - (Alternative 2)  
 (D)  3620 - (Optional 1)

**Question No.105**

1.00

 Bookmark 

A person travels at the equivalent triangle area along with the plains of the triangular area, at 18 kmph, 24 km, and 36 kmph. Tell the average speed of travel.

- (A)  22kmph - (Alternative 2)  
 (B)  **24kmph - (Optional 1)**  
 (C)  18kmph - (Optional 3)  
 (D)  34kmph - (Optional 4)

**Question No.106**

1.00

 Bookmark 

The total area of pieces of square glass  $784 \text{ cm}^2$ , which is placed on top of a table. The breadth between the sides of the table and the piece of glass is 9 cm wide. Get the length of the table.

- (A)  40 cm - (Optional 1)  
 (B)  49 cm - (Optional 4)  
 (C)  **46 cm - (Optional 3)**  
 (D)  43 cm - (Alternative 2)

**Question No.107**

1.00

 Bookmark 

The shopkeeper added 37% of the purchase price as a markup and then he gives a discount of 37% on the face value on the sale, what would be the total profit or loss percentage.

- (A)  **13.69% Loss - (Optional 4)**  
 (B)  12.96% Loss - (Optional 3)  
 (C)  13.69% profit - (Optional 2)  
 (D)  12.96% profit - (Optional 1)

**Question No.108**

1.00

 Bookmark 

The difference between earned interest from both, for investing under compound interest and general interest for 2 years, is 4 rupees. If interest rates are 4% per annum then tell the amount invested (in rupees)

- (A)  27750 - (Alternative 2)  
 (B)  **28750 - (Optional 1)**  
 (C)  26750 - (Optional 3)  
 (D)  30750 - (Alternative 4)

**Question No.109**

1.00

 Bookmark 

Under compound interest, an amount doubles in 3 years. How many years will it be 256 times its amount?

- (A)  **24 years - (Alternative 2)**  
 (B)  28 years - (Alternative 4)  
 (C)  22 years - (Alternative 1)

(D)  26 years - (Optional 3)

**Question no.110**

1.00

Bookmark

When a number is divided by 84 then the remaining 10 comes. What will be the remaining if you divide that number by 12?

- (A)  11 - (Optional 3)  
 (B)  8 - (Optional 1)  
 (C)  6 - (Optional 2)  
 (D)  **10 - (Optional 4)**

**Question No.111**

1.00

Bookmark

A cube of  $13\sqrt{3}$  cm diagonals is melted to a cuboid. If the length of the cuboid is similar to the back of the cube and the width is 6.5 cm, then what will be the height of the cuboid?

- (A)  32 cm - (Optional 4)  
 (B)  28 cm - (Alternative 2)  
 (C)  24 cm - (Optional 3)  
 (D)  **26 cm - (Optional 1)**

**Question no.112**

1.00

Bookmark

Solve:

$$(8^4)^2 \times \frac{1}{512^2} \times 8 + 18 = ?$$

- (A)  490 - (Optional 1)  
 (B)  **530 - (Optional 3)**  
 (C)  510 - (Alternative 2)  
 (D)  550 - (Alternative 4)

**Question No.113**

1.00

Bookmark

Vino received 76 points out of 80 in French, 98 out of 100 in English, 56 out of 70 in Spanish, and 43 out of 50 in Japanese. What was the total percentage it received?

- (A)  89% - (Optional 4)  
 (B)  **91% - (Optional 1)**  
 (C)  93% - (Optional 2)  
 (D)  87% - (Optional 3)

**Question No.114**

1.00

Akil shared 550 gifts among 4 children. The first part of the child is twice the share of the second child and three times the third child's share and four times the fourth child. First tell the amount of gifts received by the child and the other child.

- (A)  324 - (Optional 1)  
(B)  396 - (Alternative 4)  
(C)  384 - (Optional 3)  
(D)  372 - (Alternative 2)

**Question No.115**

1.00

Bookmark 

The ratio of salaries to Hamid, Kristo and Ganesh is 3: 5: 7, if Ganesha is getting more than 564 rupees from Hamid, then what is Christo's salary?

- (A)  505 - (Optional 3)  
(B)  805 - (Alternative 4)  
(C)  705 - (Optional 1)  
(D)  605 - (Alternative 2)

**Question no.116**

1.00

Bookmark 

214! Tell the number of the following zeros in

- (A)  51 - (Optional 3)  
(B)  47 - (Alternative 2)  
(C)  45 - (Optional 1)  
(D)  53 - (Alternative 4)

**Question No.117**

1.00

Bookmark 

In a support project of an English based company, there are 513 male and 513 female employees. The average productivity of all employees is 63 calls per day. The average call organized by the male employee is 63 calls per day. What is the average call to be paid per day by female employees?

- (A)  63 - (Alternative 2)  
(B)  61 - (Optional 1)  
(C)  67 - (Optional 4)  
(D)  65 - (Optional 3)

**Question no.118**

1.00

Bookmark 

Solve:

$$\sqrt{21.16} + \sqrt{79.21} + 8.9 = ?$$

- (A)  22.6 - (Optional 2)
- (B)  22.4 - (Optional 4)
- (C)  22.2 - (Optional 3)
- (D)  22.8 - (Optional 1)

**Question No.119**

1.00

Bookmark

Get the product of the two digits of which the smallest equator ratio (LCM) is 70 and the maximum consonant (HCF) is 7.

- (A)  480 - (Alternative 4)
- (B)  490 - (Optional 1)
- (C)  510 - (Optional 3)
- (D)  390 - (Alternative 2)

**Question No.120**

1.00

Bookmark

A bulb producing company found that 11% of the total product is faulty. If the number of non-defective products is 6319, then specify the number of defective products.

- (A)  781 - (Alternative 4)
- (B)  681 - (Optional 3)
- (C)  593 - (Optional 1)
- (D)  793 - (Alternative 2)